



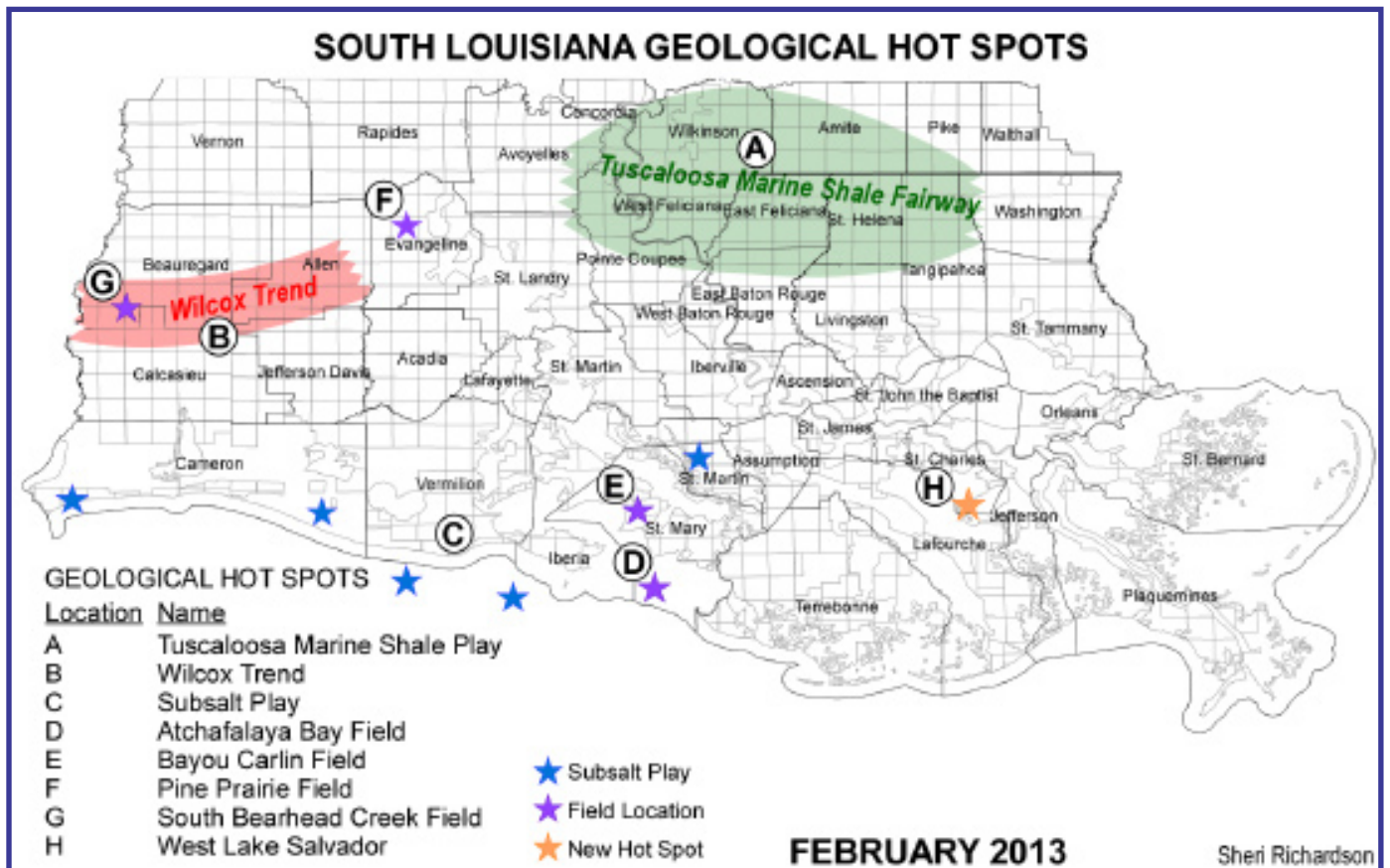
**New Orleans Chapter Newsletter**  
 Society of Independent Professional Earth Scientists  
 Volume 14, Number 2  
 February 2013

# Carlo Christina

## ***"Geological Hot Spots in Our Own Backyard"***

**Tuesday, February 19th**  
**Andrea's - Metairie**

**Registration & Networking**  
 11:30 AM  
**Program - Noon**  
**Reservations and guests:**  
 Carol St. Germain  
 504-267-3466



**Abstract:** Currently, there are three hot trends in south Louisiana: the Tuscaloosa Marine Shale, the Wilcox of southwestern Louisiana, and the onshore Subsalt Trend. (of south Louisiana). In addition, a recent hotspot, the West Lake Salvador Complex will be discussed. Examples of these trends will include four fields with significant increases in production in recent years. The presentation will include type logs, production data, current drilling activity, economics and the effects of new technology in these trends and hotspots.areas. The major players in each trend will be discussed, including companies like Encana, Devon, Goodrich and Enron Oil & Gas. In the Wilcox Trend, Midstates Petroleum and El-Paso are the most active companies and have drilled more than 100 wells in the past year, resulting in significant increases in oil production. Key Wilcox fields include Pine Prairie, South Bearhead Creek, W. Gordon and N. Coward Gully.

*(Mr. Christina's program received excellent comments at a recent PLANO luncheon on the Northshore.)*



## Carlo Christina - bio sketch

Carlo C. Christina is a well-known and respected geologist here in New Orleans and south Louisiana. Born in New Orleans he earned a B.S. in geology at Louisiana State University. He served in the U.S. Air Force as a 1st Lieutenant from 1952-54, specializing in radar and electronics.

His professional career includes the following corporate highlights: 1980-1994, President and Co-founder, C & R Exploration, Inc.; 1977-1980 Sr. Vice-president, Martin Exploration Company; 1961-1977 Sr. Vice-president and director, Exchange Oil & Gas Corporation

Mr. Christina is a member of the Society of Professional Earth Scientists (No. 1191); the New Orleans Geological Society, where he served as President, 1989 and awarded the NOGS Honorary Life Membership in 1991. He received the Gulf Coast Association of Geological Societies' Distinguished Service Award in 1996 and Honorary Membership in 1997

In 2011 Mr. Christina was inducted into the Louisiana State University College of Science Hall of Distinction. From 2002 to the present he has served as a trustee on the East Jefferson General Hospital's Foundation Board.

## Newsletter Ad Rates

Sessions	September - December (4 issues) and January - May (5 issues)
Business Card	\$25 per session
1/4-page	\$100 per session
1/2-page	\$200 per session
Full page	\$400 per session
Non-member Business Card	\$50 per session
Send ad copy to	Tom Klekamp, Editor klekamp@bellsouth.net
Send payment to	SIPES New Orleans Chapter PO Box 50088 New Orleans LA 70150-0088

## Chairman's Column

Ultimo mense proxime XX membrorum comitarentur iuncturam API prandium downtown ad Roosevelt Hotel. Tommy Beaudreau, Director BOEM et Don Briggs, Praeses LA Oil et Gas Association, coniunctim adlocuti humus. Sine singulis, similiter inter plures loquebantur longe nuntiisque elit. A prodigiosum torquent, ad finem conventus fuit, cum coetus anti oleum et gas protestores intravit tergo autem colloquii cella et coepit cantus solito "plaudet captionem". Hopefully omnes reditum eorum bikes et pedaled sospites restituit quocumque venientes removerunt!

His mensis est ficiis sollemnibus "haudquaquam eloquens" conventus, tergum procul Andrea scriptor on Tuesday, December XVIII. Fer, iocos, tormina, et suggestionibus, etc

Conventus palmulae annum sequentem sunt: January XV, February XIX, Martii XIX, April XVI et maio XXI (vespere)

Nos aptabis palmulae si est ibi conflictu cum aliqua alia significant eventus. Omnes congressuum erit in Andrea est.

Sumus submitit a membership applicatio LW "Dick" Paxton approbatione.

Reese missae nuper ex e-mail notices ad membra cum insolutis deuoria, dum responsio fuerit bonus paucis adhuc sunt praestantes. Reprehendo facio

certus vos es non deliquerit?

Unum hoc enim adipiscendo anni volo hoc tempus, consilium legatorum nomine tuo chairmen velle faustum annum novum omnesque Verbum Caro!

*Louis E. Lemarié*

Chairman



# LAFAYETTE GEOLOGICAL RESEARCH CENTER, LLC

201 Heymann Blvd., Suite 33 • Lafayette, LA 70503

Tel: 337-233-8197 • Fax: 337-233-8177

## **COVERAGE:**

**Louisiana / Federal / State Offshore**

- *Multi State Geo Tech Services • Completion Data*
- Production Data • Well Logs • Maps*

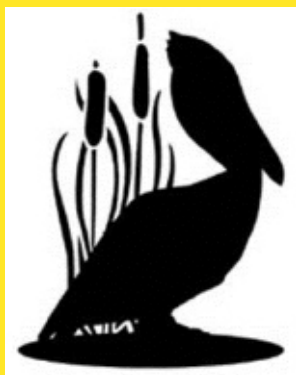
~ MEMBERSHIPS AVAILABLE ~

*The Industry's Premier • Well Data Center*

[orders@lafayettegrc.com](mailto:orders@lafayettegrc.com)

CALL OR EMAIL TODAY FOR MORE INFORMATION!

## **LaBay Exploration, L.L.C.**



**111 Veterans Blvd. Suite 1550  
Metairie, Louisiana 70005**

**Office: 504-371-5967**

**Fax: 504-371-5969**

**[www.labayexploration.com](http://www.labayexploration.com)**

**CORPORATE  
AND INDIVIDUAL  
SPONSORSHIPS  
ARE AVAILABLE FOR THE  
2013 GCAGS CONVENTION  
NEW ORLEANS  
OCTOBER 6-8**

**CONTACT  
ART JOHNSON  
504-220-6208**

**State Mineral and Energy Board  
Meeting and Lease Sale**

8:00 am - 12:00 pm

Location: LaSalle Building,  
LaBelle Room, Baton Rouge

Wednesday, March 13, 2013

Wednesday, April 10, 2013

Wednesday, May 8, 2013

**BOEM  
Central Gulf of Mexico  
Lease Sale 227**

Wednesday, March 13, 2013

New Orleans

**Roy Walther  
Petroleum Geologist**

2421 Prancer Street  
New Orleans, Louisiana 70131

504-392-8513 phone/fax  
504-392-9332

**Richard Provensal**

**Apex Geophysical Services, Inc.**

**3337 N. Hullen St., Ste. 201  
Metairie, LA 70002**

**504-779-5006**

**richard@apexgeophysical.com**

**ART JOHNSON  
HYDRATE ENERGY  
INTERNATIONAL, LLC**

612 PETIT BERDOT DRIVE  
KENNER, LOUISIANA 70065  
504-220-6208

**WILLIS CONATSER  
GEOLOGIST**

SOUTHEAST LOUISIANA  
ONSHORE PROSPECTS

**WECONATSER@AOL.COM**

**HARBRIDGE  
PETROLEUM CORPORATION**

**JOHN P. HARLAN**

P.O. BOX 7865  
METAIRIE, LA 70010-7865  
(504) 831-4693

(3200 Ridgelake Drive - Ste 207  
Metairie, LA 70002)

**ALPINE EXPLORATION  
COMPANIES, INC.**

Al Porretto and  
Merle Duplantis, Vice-President, Geology  
5910 N Central Xway, Ste 270  
Dallas, Texas 75206  
www.alpineexci.com  
ap@alpinexci.com md@alpinexci.com  
Dallas #s  
214-692-0070 Fax: 214-692-0071  
Merle's Mobile: 504-236-4650  
Al's Mobile 504-452-4020

**Zot Oil & Gas, LLC**

**Jim Zotkiewicz  
GEOLOGIST**

3909 METAIRIE COURT  
METAIRIE, LA 70002

Phone: 504-452-5446  
Email: jimzot38@zotoil.com

**SEEK PRODUCTION**

Petroleum Engineering and  
Geologic Consultants.

Over 30 years of large & small company experience

**Brian Evans** **William Geen, Jr.**  
Sr. Petroleum Engineer Geology & Geophysics  
Houston and Greater New Orleans Areas

Louisiana 601-799-5925  
Texas 281-710-7034

email: williamgeen@bellsouth.net  
website: seekproductionllc.com

**SEISOX, LLC**

*Seismic Opportunity Exploration*

Seismic Interpretation  
2D/3D

Map - Generate - Evaluate  
Geoquest - SMT - Landmark

**Philip Haerer**  
Consulting Geophysicist

504-885-9238  
cell 504-250-0451  
phaerer@bellsouth.net



## CHAPTER CONTACTS

Chairman  
Louis Lemarié 504-393-8659,  
lemarie6@cox.net,

Vice-Chairman - TBA

Treasurer, Reese Pinney  
504-566-9802 X-121  
rbpinney@bellsouth.net

Secretary,  
Historical & Remembrances  
Art Johnson 504-220-6208  
artjohnson51@hotmail.com

Membership, Tony Carollo  
504-885-0004  
tcarollo@bellsouth.net

Website, Dave Broadbridge  
david@kimsuol.com

Editor, Tom Klekamp  
985-630-2480  
klekamp@bellsouth.net

Administrative Secretary  
and Reservations  
Carol St. Germain 504-267-3466  
CarolA.StGermain@gmail.com

National SIPES Board  
Chapter Representative  
Jim Evans III  
337-828-1955  
jpe3@cox.net

### BEACON EXPLORATION

Al Baker, Jr., Senior Explorationist  
Abaker1006@aol.com

Hank E. Ecroyd, Senior Explorationist  
hecroyd@aol.com

3636 N. Causeway Blvd., Suite 210  
Metairie, LA 70002

Office: 504-836-2710  
Fax: 504-836-2709

### Mark Your Calendars!

#### 2013 New Orleans Chapter Luncheon Meetings

**February 19 - Carlo Christina**

**March 19 - tba**

**April 16 - tba**

**May 21 - evening dinner**

**June 17-20 - Santa Fe SIPES**

### BRUNET FINANCIAL GROUP

RANDY BRUNET, CPA, PFS

*Securities offered through  
HD Vest Investment Services, Mbr SIPC  
Advisory services offered through  
HD Vest Advisory Services*

446 Rosa Avenue  
Metairie, Louisiana 70005  
504-838-0227 Fax 504-833-5217  
eltonfan@bfg.nocoxmail.com

Brunet Financial Group is a not a registered broker/dealer  
nor independent investment advisory firm

### GEO-DRAFT, INC.

A Professional Drafting and Graphics Firm  
Geological, Geophysical & Land Drafting  
Courtroom & Legal Graphics

**Anthony Catalanotto, President**

3349 Ridgelake Drive, Suite 202  
Metairie, Louisiana 70002

Office 504-836-2882 Cellular 504-481-7291  
Fax 504-836-2877 Home 504-464-5737

www.geodraftinc.com  
geodraft@bellsouth.

### Louis Gilbert and Associates, Inc.

**Consulting Geologists**

**LOUIS F. GILBERT**

3636 N. Causeway Blvd. Suite 204  
Metairie, LA 70002-7216  
(504) 834-8112  
FAX (504) 834-1736  
louis@louisgilbert.com

### BOB DOUGLASS EXPLORATION CO.

M.R. (Bob) Douglass  
Consulting Petroleum Geologist

P.O. Box 1059  
Destrehan, LA 70047

bobdouglass@cox.net  
985-764-7463  
Cell 225-247-0600  
Fax 985-764-0955

**Visit our SIPES New Orleans Chapter Website**

**<http://www.sipesneworleans.org/>**

**Past Newsletters Calendar Photos Links  
Consultants and Advertisers**

**David Broadbridge, Webmaster  
david@kimsuol.com**

Rank	Field	Crude Oil	Condensate	Total Oil
1	Lake. Washington	3,905,438	104,328	4,009,766
2	Cote Blanche Bay, W	1,564,516	5,750	1,570,226
3	South Pass Block 24	1,465,020	100,031	1,565,051
4	Pine Prairie	1,300,923	10,673	1,311,596
5	Caillou Island	1,108,186	374,455	1,482,641
6	Weeks Island	1,029,439	5,279	1,034,718
7	Lockhart Crossing	930,193	18,763	948,929
8	West Bay	868,802	91,761	960,563
9	Bear Head Creek, S	807,152	419,942	1,227,094
10	Timbalier Bay Onshore	795,207	255,351	1,050,588
11	Hackberry, E	782,171	0	782,171
12	Breton Sound Block 20	725,091	2,635	727,726
13	Golden Meadow	666,870	244,529	911,399
14	Black Bay, N	536,235	0	536,236
15	Lake Barre	484,453	105,742	590,195

Rank	Field	Natural Gas	Casinghead	Total Gas
1	<b>Atchafalaya Bay</b>	14,730,859	0	14,730,859
2	<b>Bayou Carlin</b>	13,626,849	0	13,626,849
3	Judge Digby	12,439,483	0	12,439,483
4	Chalkley	9,589,447	19,063	9,608,510
5	Lac Blanc	8,050,207	15,312	8,065,519
6	Kent Bayou	7,534,486	0	7,534,486
7	Golden Meadow	6,671,939	400,713	7,072,652
8	Marceaux Island	6,369,370	0	6,369,370
9	Breton Sound Block 33	6,175,404	0	6,175,404
10	Belle Isle	6,095,779	0	6,095,779
11	Gibson	5,863,657	13,269	5,876,926
12	Fresh Water Bayou	5,548,972	16,812	5,565,784
13	Morganza	5,096,884	0	5,096,884
14	South Pass Block 24	5,095,317	2,830,370	7,925,687
15	Garden City	4,923,991	80,412	5,004,403

*2011 Oil and Natural Gas Production Ranking by Field. Source: SONRIS, Lafayette District, Onshore, 2011  
For further information plan on attending Carlo Christina's talk, "Oil and Gas Hostspots in Our Own Backyard."  
Tuesday, February 19th*

SOCIETY OF INDEPENDENT PROFESSIONAL EARTH SCIENTISTS  
NEW ORLEANS CHAPTER - NEWSLETTER  
P.O. BOX 50088  
NEW ORLEANS, LOUISIANA 70150-0088

**FIRST CLASS MAIL**