



## New Orleans Chapter Newsletter

Society of Independent Professional Earth Scientists  
October 2015

# Tom Bergeon

40 Years of Evolution in Gulf of Mexico Exploration Geology – Play Concepts, Prospecting Tools, and Risk Assessment through Time



## Chairman's Column

Last month, 30 members and guests attended our first meeting for 2015-2016 year. We heard an interesting talk by Professor Eric Smith from Tulane's Energy Institute covering various energy related subjects.

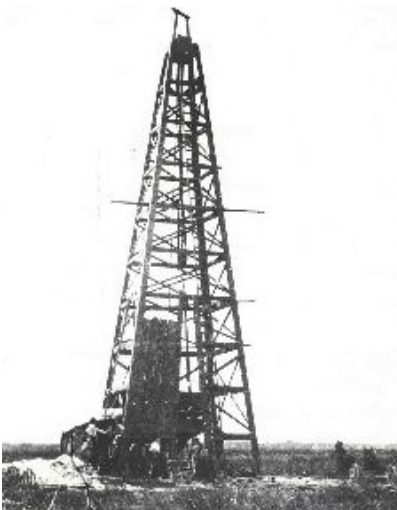
This month we shift gears to a more technically focused presentation by Tom Bergeon with Century Exploration. Tom has given his talk to several groups, including NOGS last month with excellent feedback.

Next month is the joint societies luncheon, downtown at the Roosevelt Hotel on November 10. As in the past, this meeting is covered by your dues. More details will follow.

Speaking of dues, Roy Walther reports a fairly good response, but some of you have not yet sent in your payment. Check your records!

As previously reported, our chapter has donated a \$2,500 scholarship award to the UNO Department of Earth and Environmental Sciences (Geology), to be shared by two students. We have invited Professor Martin O'Connell, chairman of the department and the two recipients, Grad students Rachel Gaspard and Joseph Frank, to be our guests at this month's meeting.

*Louis E. Lemarié*



## Tuesday, October 20th

### Andrea's - Metairie

**Registration & Networking - 11:30 AM**

**Lunch and Talk - Noon**

**Reservations and guests: Carol St. Germain - 504-267-3466**

**Tom Bergeon** has worked a number of plays in the Gulf of Mexico and his forte is subsalt prospecting. Tom has lived in New Orleans since 1986 where he has worked with Chevron for 11 years from 1986–1997, Shell for 9 years from 1997–2006, and Century Exploration New Orleans the past 9 years. Tom's interests include a wide range of music, travel, art, and hiking mountains.

### Abstract Intro:

Exploration geology has seen many advances in technology, geologic concepts and resources available in the last forty years. Many new technological steps have been utilized to reduce risk and differentiate the ever-elusive oil discovery from the non-prospective dry hole. Despite our great technological advancements, in many cases the key risks may at times be reduced but not fully mitigated. The search for competitive advantages in prospecting drove many new technological breakthroughs.





# LaBay

## Exploration Co., L.L.C.

1070 A West Causeway Approach  
Mandeville, Louisiana 70471

Office (985) 951-2012  
Fax (985) 951-2055

[www.labayexploration.com](http://www.labayexploration.com)

# BRUNET

WEALTH MANAGEMENT

- EST 1984 -

**Randy M. Brunet CPA PFS**

Registered Representative\*  
[eltonfan@bfg.nocoxmail.com](mailto:eltonfan@bfg.nocoxmail.com)

TEL (504) 838-0227

FAX (504) 833-5217

446 Rosa Avenue  
Metairie, LA 70005

\*Securities offered through HD VEST INVESTMENT SERVICES, Member SIPC (Advisory Services Offered Through HD VEST ADVISORY SERVICES, 6333 North State Highway 161, Suite 400, Irving, TX 75038) (972) 470-6000  
Brunet Wealth Management is not a registered broker/dealer or independent investment advisory firm.

Investment Management | Cash Flow and Debt Management  
Family Risk Management | Retirement Planning  
Education Planning | Legacy Planning | Business Planning  
Special Situations Planning

[BrunetWealthManagement.com](http://BrunetWealthManagement.com)

**HARBRIDGE**  
**PETROLEUM CORPORATION**

**JOHN P. HARLAN**

512 S. Tyler St.  
Covington, LA 70433

504-210-5824  
jph1123@yahoo.com

**SEEK PRODUCTION**

Petroleum Engineering and  
Geologic Consultants.

Over 30 years of large & small company experience

**Brian Evans**      **William Geen, Jr.**  
Sr. Petroleum Engineer      Geology & Geophysics  
Houston and Greater New Orleans Areas

Louisiana 601-799-5925  
Texas 281-710-7034

email: williamgeen@bellsouth.net  
website: seekproductionllc.com

**SEISOX, LLC**

*Seismic Opportunity Exploration*

Seismic Interpretation  
2D/3D  
Map - Generate - Evaluate  
Geoquest - SMT - Landmark

**Philip Haerer**  
Consulting Geophysicist

504-885-9238  
cell 504-250-0451  
phaerer@bellsouth.net

**CHAPTER CONTACTS**

Chairman  
Louis Lemarié 504-393-8659,  
lemarie6@cox.net

Vice-Chairman

Treasurer, Roy Walther  
r.walther@earthlink.net

Secretary,  
Historical & Remembrances  
Art Johnson 504-220-6208  
artjohnson51@hotmail.com

Membership, Scott Wainwright  
scott\_wainwright@hotmail.com

Website & Newsletter, Dave Broadbridge  
david@kimsuoil.com

Administrative Secretary  
and Reservations  
Carol St. Germain 504-267-3466  
CarolA.StGermain@gmail.com  
National SIPES Board

Chapter Representative  
Mike Fogarty

**ALPINE EXPLORATION**  
**COMPANIES, INC.**

Al Porretto and  
Merle Duplantis, Vice-President, Geology  
5910 N Central Xway, Ste 270  
Dallas, Texas 75206  
www.alpineexci.com  
ap@alpinexci.com md@alpinexci.com  
Dallas #s  
214-692-0070 Fax: 214-692-0071  
Merle's Mobile: 504-236-4650  
Al's Mobile 504-452-4020

## ***KIMSU OIL CO.***

**David P. Broadbridge**

208 N. New Hampshire

Covington, LA 70433

985-867-9443

david@kimsuoil.com



## **GEO-DRAFT, INC.**

A Professional Drafting and Graphics Firm

Geological, Geophysical & Land Drafting

Courtroom & Legal Graphics

**Anthony Catalanotto, President**

516 Maryland Avenue

Metairie, LA 70003

504-481-7291

www.geodraftinc.com

geodraft@bellsouth.

### **Newsletter Ad Rates**

Sessions	September - December (4 issues) and January - May (5 issues)
Business Card	\$25 per session
1/4-page	\$100 per session
1/2-page	\$200 per session
Full page	\$400 per session
Non-member Business Card	\$50 per session
Send ad copy to	David Broadbridge, Editor dave@kimsuoil.com
Send payment to	SIPES New Orleans Chapter PO Box 50088 New Orleans LA 70150-0088



### **Beacon Exploration**

Al Baker, Jr., Senior Explorationist

Abaker1006@aol.com

Hank E. Ecroyd, Senior Explorationist

hecroyd@aol.com

3636 N. Causeway Blvd., Suite 210

Metairie, LA 70002

Office: 504-836-2710

Fax: 504-836-2709

### **Visit our SIPES New Orleans Chapter Website**

**<http://www.sipesneworleans.org/>**

**Past Newsletters Calendar Photos Links**

**Consultants and Advertisers**

**David Broadbridge, Webmaster**

**david@kimsuoil.com**

**Roy Walther**  
**Petroleum Geologist**

2421 Prancer Street  
New Orleans, Louisiana 70131

504-392-8513 phone/fax  
504-392-9332

**Richard Provensal**

**Apex Geophysical Services, Inc.**

**3337 N. Hullen St., Ste. 201**  
**Metairie, LA 70002**

**504-779-5006**

**richard@apexgeophysical.com**

**NORTHCOAST OIL COMPANY**

Jack Thorson  
610 E. Rutland Street  
Covington, LA 70433

**jack@northcoastoil.com**  
(985) 898-3577 Office  
(985) 898-3585 FAX

**ART JOHNSON**

**HYDRATE ENERGY**  
**INTERNATIONAL, LLC**

612 PETIT BERDOT DRIVE  
KENNER, LOUISIANA 70065  
504-220-6208



Jim Zotkiewicz  
President

400 Poydras Street  
Suite 1440  
New Orleans, LA 70130  
Office: (504) 218-2929  
Cell: (504) 452-5446  
jzot@whitneyoilandgasllc.com