



New Orleans Chapter Newsletter

Society of Independent Professional Earth Scientists

December 2019



Tuesday, December 17th

Andrea's - Metairie

Registration & Networking - 11:15 AM

(note the longer "cocktail time"

Lunch and Open Mic - Noon

Reservations and guests: Carol St. Germain - 504-267-3466

Chairman's Column

Last month at the API Joint Society luncheon, we had 18 members present, but since the total attendance was less than 60, our group probably was the largest organization represented. This event drew close to 200, not too long ago.

This month, on December 17th we will have our annual "no speaker" holiday lunch meeting at Andrea's. As usual we will have an "open mike" for your comments, complaints, etc.

Sadly, we recently lost another longtime member, when Don Andrews passed away on November 22 after a brief illness. Don was very active in the local oil and gas community for over 60 years and he will be missed by all of us who knew him. Our chapter will make a donation to the SIPES Foundation in his memory.

Dues notices for our spring session will go out this month. Response was excellent last period....keep it up!

Chairman's Comments:

We missed "getting rid" of our "lawsuit happy" governor by about 40,000 votes, but gained in the legislature and the Supreme Court.

Activity in So. La. continues to be very low, with the SONRIS weekly report remaining at about 8 pages. Of the 64 wells listed, only 9 are shown as actually drilling.

Oil prices crept up briefly, but have settled back down to the mid-fifties, while natural gas is still lagging around \$2.50.



*Merry Christmas
and
Happy New Year!*

Louis E. Lemarié





Randy M. Brunet CPA PFS

Registered Representative*

eltonfan@bfg.nocoxmail.com

TEL (504) 838-0227

FAX (504) 833-5217

446 Rosa Avenue
Metairie, LA 70005

*Securities offered through HD VEST INVESTMENT SERVICES, Member SIPC. Advisory Services Offered Through HD VEST ADVISORY SERVICES, 6333 North State Highway 161, Suite 400, Irving, TX 75038 | (972) 870-6000
Brunet Wealth Management is not a registered broker/dealer or independent investment advisory firm.

Investment Management | Cash Flow and Debt Management
Family Risk Management | Retirement Planning
Education Planning | Legacy Planning | Business Planning
Special Situations Planning

BrunetWealthManagement.com

CLIFFORD WILLIAMS & ASSOCIATES, LLC

Reservoir Engineering

Cliff Williams, P.E.

Principal

P. O. Box 1081

Mandeville, LA 70470

(985) 705-7552

cliffwilliams1@me.com

<https://www.linkedin.com/in/clifford-williams-p-e-88390222>

CLIFFORD WILLIAMS & ASSOCIATES, LLC

- Oil and Gas Asset Valuation
- Acquisitions and Divestitures
- Reserve Reporting
- Field Depletion Strategies
- Project Economics
- LOE and Downtime Reduction Assessments



Tim Klibert

Senior Vice President
Business Development and Strategy

711 West Tenth Street Reserve, Louisiana 70084

24-Hour Service: 1-800-280-2096

Fax: (985) 536-2427 Cell: (504) 451-9515

E-mail: tklibert@dwl-usa.com / Website: www.dwl-usa.net

New Orleans • Lafayette • Houston • Dallas • Corpus Christi • Appalachian



Seismic Exchange, Inc.

Dallas • Denver • Houston • New Orleans • Oklahoma City
Corpus Christi • Tulsa

Layne Williams

*New Orleans Region
Marketing Manager*

201 St. Charles Avenue, Suite 4300
New Orleans, LA 70170-4300
Direct: 504-510-2508 Fax: 504-581-9591
Cell: 504-458-3056
E-MAIL: lwilliams@seismicexchange.com

Wayne Cook
Seitel
(985) 687-6467
wcook@Seitel.com



Merle J. Duplantis
Retired Explorationist
Call as needed
(504) 236-4650
merleduplantis@outlook.com

George Severson
Geological Consultant
New Orleans, LA

Work Phone: 504-394-0939
Mobile Phone: 504-352-0667



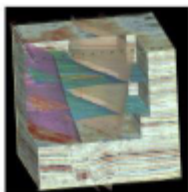
Apex Geophysical Services, Inc.

3337 N. Hullen St., Ste. 201

Metairie, La 70002

(O) 504-779-5006

(C) 504-231-2748



Richard D. Provensal
Richard@ApexGeophysical.com

CHAPTER CONTACTS

Chairman
Louis Lemarié 504-393-8659,
lemarie6@cox.net

Vice-Chairman
Cliff Williams
cliffwilliams1@me.com

Treasurer
Eric Broadbridge
eric@northcoastoil.com

Secretary,
Historical & Remembrances

Membership, Scott Wainright
scott_wainwright@hotmail.com

Website & Newsletter
Dave Broadbridge
david@kimsuol.com

Administrative Secretary
and Reservations
Carol St. Germain 504-267-3466
CarolA.StGermain@gmail.com
National SIPES Board

Chapter Representative

GEO-DRAFT, LLC

A Professional Drafting and Graphics Firm
Geological, Geophysical & Land Drafting
Courtroom & Legal Graphics

Anthony Catalanotto, Manager

**516 Maryland Avenue
Metairie, LA 70003
504-481-7291**

geodraft@bellsouth.

Newsletter Ad Rates

Sessions	September - December (4 issues) and January - May (5 issues)
Business Card	\$25 per session
1/4-page	\$100 per session
1/2-page	\$200 per session
Full page	\$400 per session
Non-member Business Card	\$50 per session
Send ad copy to	David Broadbridge, Editor dave@kimsuol.com
Send payment to	SIPES New Orleans Chapter PO Box 50088 New Orleans LA 70150-0088



Beacon Exploration

**Al Baker, Jr. Senior Explorationist
Abaker1006@aol.com**

**529 Solitude Way
Covington, LA 70433
504-460-3421**

Visit our SIPES New Orleans Chapter Website

**<http://www.sipesneworleans.org/>
Past Newsletters Calendar Photos Links
Consultants and Advertisers
David Broadbridge, Webmaster
david@kimsuol.com**