



## New Orleans Chapter Newsletter

Society of Independent Professional Earth Scientists  
March 2019

# Mark Wojna

**Breton Sound – A Conventional Deep Water Play in Shallow Louisiana State Waters**



### Chairman's Column

Our meeting last month drew a slightly smaller attendance than usual; with 32 members and guests present. We did hear however an excellent and informative presentation on the new tax code by CPA and tax expert Gina Rachel, with P&N here in New Orleans.

This month we will switch back to a technical subject, with one of our own members, Mark Wojna from Upstream Exploration discussing Breton Sound. Once again "hats off" to Cliff for providing a great mix of speakers.

Last month I said that in April we would hold our 3rd membership/crawfish boil at the Harbor Bar and Grill----- I was mistaken --- -it will be our 4th----how time flies! Remember that this event is to introduce potential new members to SIPES and our chapter. Bring a guest if you can! Only a handful of unpaid dues notices remain ---check to make sure you are not one of them!

### Chairman's Comment

The ironic thing about newly elected N. Y. Representative Alexandria Ocasio-Cortez's "Green New Deal", is that if it was fully implemented, it would turn her own district into an uninhabitable waste land, unable to support any significant level of human life! Who votes for these people???

Oil prices seem to have settled in the mid-fifties range, at least for now---let's hope this represents a "floor" with some upside in the future.

Natural gas is in the \$2.75 range, but with more and more LNG Export terminals being planned and approved, the demand for gas should increase.

*Louis E. Lemarié*

**Tuesday, March 19th**  
**Andrea's - Metairie**

**Registration & Networking - 11:30 AM**  
**Lunch and Talk - Noon**

**Reservations and guests: Carol St. Germain - 504-267-3466**

### Mark Wojna

#### Upstream Exploration LLC

Mark J. Wojna has been Vice President of Exploration for Upstream Exploration since the company's inception in February 2016. Prior to Upstream, Mark served as Gulf Coast Exploration Manager for Century Exploration New Orleans from 2008 to 2015. Mark's 29 year career with Century was focused on oil and gas exploration and development in the federal OCS and state waters of Louisiana and onshore South Louisiana. Mark was instrumental in developing and growing the geopressured Middle Miocene trend in Breton Sound for Century Exploration and Upstream Exploration. Mark had a technical paper published on Century's discovery at Breton Sound 53 Field in the New Orleans Geological Society's 2010 South Louisiana Oil & Gas Fields Guidebook. Mark has a Bachelor of Science degree in geology from Michigan State University and a Master of Science degree in geology from the University of Southern Mississippi.

# BRUNET

WEALTH MANAGEMENT

- EST 1984 -

**Randy M. Brunet CPA PFS**

Registered Representative\*

[eltonfan@bfg.nocoxmail.com](mailto:eltonfan@bfg.nocoxmail.com)

TEL (504) 838-0227

FAX (504) 833-5217

446 Rosa Avenue  
Metairie, LA 70005

\*Securities offered through HD VEST INVESTMENT SERVICES, Member SIPC | Advisory Services Offered Through HD VEST ADVISORY SERVICES, 6333 North State Highway 161, Suite 400, Irving, TX 75038 | (972) 870-6000  
Brunet Wealth Management is not a registered broker/dealer or independent investment advisory firm.

Investment Management | Cash Flow and Debt Management  
Family Risk Management | Retirement Planning  
Education Planning | Legacy Planning | Business Planning  
Special Situations Planning

[BrunetWealthManagement.com](http://BrunetWealthManagement.com)

## CLIFFORD WILLIAMS & ASSOCIATES, LLC

Reservoir Engineering

**Cliff Williams, P.E.**

Principal

P. O. Box 1081

Mandeville, LA 70470

(985) 705-7552

[cliffwilliams1@me.com](mailto:cliffwilliams1@me.com)

<https://www.linkedin.com/in/clifford-williams-p-e-88390222>

### CLIFFORD WILLIAMS & ASSOCIATES, LLC

- Oil and Gas Asset Valuation
- Acquisitions and Divestitures
- Reserve Reporting
- Field Depletion Strategies
- Project Economics
- LOE and Downtime Reduction Assessments



**Tim Klibert**

Senior Vice President  
Business Development and Strategy

711 West Tenth Street Reserve, Louisiana 70084

24-Hour Service: 1-800-280-2096

Fax: (985) 536-2427 Cell: (504) 451-9515

E-mail: tklibert@dwl-usa.com / Website: www.dwl-usa.net

New Orleans • Lafayette • Houston • Dallas • Corpus Christi • Appalachian



**SEI<sup>®</sup> Seismic Exchange, Inc.**

Dallas • Denver • Houston • New Orleans • Oklahoma City  
Corpus Christi • Tulsa

**Layne Williams**

*New Orleans Region  
Marketing Manager*

201 St. Charles Avenue, Suite 4300  
New Orleans, LA 70170-4300  
Direct: 504-510-2508 Fax: 504-581-9591  
Cell: 504-458-3056  
E-MAIL: lwilliams@seismicexchange.com

**Wayne Cook**  
**Seitel**  
**(985) 687-6467**  
**wcook@Seitel.com**



**Merle J. Duplantis**  
**Retired Explorationist**  
**Call as needed**  
**(504) 236-4650**  
**merleduplantis@outlook.com**

**George Severson**  
**Geological Consultant**  
**New Orleans, LA**

**Work Phone: 504-394-0939**  
**Mobile Phone: 504-352-0667**



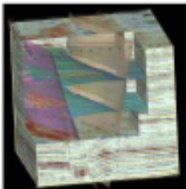
**Apex Geophysical Services, Inc.**

**3337 N. Hullen St., Ste. 201**

**Metairie, La 70002**

**(O) 504-779-5006**

**(C) 504-231-2748**



**Richard D. Provensal**  
**Richard@ApexGeophysical.com**

## **CHAPTER CONTACTS**

Chairman  
Louis Lemarié 504-393-8659,  
lemarie6@cox.net

Vice-Chairman  
Cliff Williams  
cliffwilliams1@me.com

Treasurer  
Eric Broadbridge  
eric@northcoastoil.com

Secretary,  
Historical & Remembrances

Membership, Scott Wainright  
scott\_wainwright@hotmail.com

Website & Newsletter  
Dave Broadbridge  
david@kimsuoil.com

Administrative Secretary  
and Reservations  
Carol St. Germain 504-267-3466  
CarolA.StGermain@gmail.com  
National SIPES Board

Chapter Representative

## **GEO-DRAFT, LLC**

A Professional Drafting and Graphics Firm  
Geological, Geophysical & Land Drafting  
Courtroom & Legal Graphics

**Anthony Catalanotto, Manager**

**516 Maryland Avenue  
Metairie, LA 70003  
504-481-7291**

[www.geodraftinc.com](http://www.geodraftinc.com)  
[geodraft@bellsouth.com](mailto:geodraft@bellsouth.com)

### **Newsletter Ad Rates**

Sessions	September - December (4 issues) and January - May (5 issues)
Business Card	\$25 per session
1/4-page	\$100 per session
1/2-page	\$200 per session
Full page	\$400 per session
Non-member Business Card	\$50 per session
Send ad copy to	David Broadbridge, Editor <a href="mailto:dave@kimsuoil.com">dave@kimsuoil.com</a>
Send payment to	SIPES New Orleans Chapter PO Box 50088 New Orleans LA 70150-0088



**Beacon Exploration**

**Al Baker, Jr. Senior Explorationist**  
[Abaker1006@aol.com](mailto:Abaker1006@aol.com)

**529 Solitude Way  
Covington, LA 70433  
504-836-2710**

**Visit our SIPES New Orleans Chapter Website**

**<http://www.sipesneworleans.org/>**

**Past Newsletters Calendar Photos Links**

**Consultants and Advertisers**

**David Broadbridge, Webmaster**

**[david@kimsuoil.com](mailto:david@kimsuoil.com)**