



Chairman's Column

Last month we heard an excellent presentation on the Austin Chalk play in central Louisiana and Texas, from Kirk Barrell, one of our members. Kirk's talk was well supplemented by numerous slides. He obviously knows his subject!

On December 17th we will have our annual "no speaker" holiday lunch meeting at Andrea's.

This month, we will participate in the API Delta Chapter's joint society luncheon meeting, downtown at the Marriott on Convention Center Blvd. There will be two keynote speakers this year, Kristi Trail with the Lake Pontchartrain Basin Foundation and David Dismukes from the Conference for Energy Studies at LSU.

This meeting is included in our dues and if you attend, identify yourself as a SIPES member at the entrance table. Valet parking will be available for \$10, which is a pretty good deal for downtown.

Chairman's Comments:

On November 16 we go back to the voting booth for the runoff election for governor and several other races. Remember to vote and keep in mind the incumbent's record on punitive lawsuits against the energy industry.

The price of oil (WTI) seems to have settled in the mid fifties (\$54 as I write this), but natural gas continues to lag below \$3. I saw one prediction that it will average less than \$2 next year!

Louis E. Lemarié

New Orleans Chapter Newsletter

Society of Independent Professional Earth Scientists
November 2019

2019 API Delta Chapter Joint Society Luncheon



KEYNOTE SPEAKERS
Kristi L. Trail, P.E. - Executive Director of the Lake Pontchartrain
Basin Foundation



David E. Dismukes, Ph.D. - Professor, Executive Director, and
Director of Policy Analysis at the Center for
Energy Studies, Louisiana State University

Tuesday, November 12th

Marriott Convention Center
859 Convention Center Blvd. New Orleans, LA 70130
Registration Begins 11:00 Program Begins 11:30

Reservations and guests: Carol St. Germain - 504-267-3466



Randy M. Brunet CPA PFS

Registered Representative*

eltonfan@bfg.nocoxmail.com

TEL (504) 838-0227

FAX (504) 833-5217

446 Rosa Avenue
Metairie, LA 70005

*Securities offered through HD VEST INVESTMENT SERVICES, Member SIPC. Advisory Services Offered Through HD VEST ADVISORY SERVICES, 6333 North State Highway 161, Suite 400, Irving, TX 75038 | (972) 870-6000
Brunet Wealth Management is not a registered broker/dealer or independent investment advisory firm.

Investment Management | Cash Flow and Debt Management
Family Risk Management | Retirement Planning
Education Planning | Legacy Planning | Business Planning
Special Situations Planning

BrunetWealthManagement.com

CLIFFORD WILLIAMS & ASSOCIATES, LLC

Reservoir Engineering

Cliff Williams, P.E.

Principal

P. O. Box 1081

Mandeville, LA 70470

(985) 705-7552

cliffwilliams1@me.com

<https://www.linkedin.com/in/clifford-williams-p-e-88390222>

CLIFFORD WILLIAMS & ASSOCIATES, LLC

- Oil and Gas Asset Valuation
- Acquisitions and Divestitures
- Reserve Reporting
- Field Depletion Strategies
- Project Economics
- LOE and Downtime Reduction Assessments



Tim Klibert

Senior Vice President
Business Development and Strategy

711 West Tenth Street Reserve, Louisiana 70084

24-Hour Service: 1-800-280-2096

Fax: (985) 536-2427 Cell: (504) 451-9515

E-mail: tklibert@dwl-usa.com / Website: www.dwl-usa.net

New Orleans • Lafayette • Houston • Dallas • Corpus Christi • Appalachian



Seismic Exchange, Inc.

Dallas • Denver • Houston • New Orleans • Oklahoma City
Corpus Christi • Tulsa

Layne Williams

*New Orleans Region
Marketing Manager*

201 St. Charles Avenue, Suite 4300
New Orleans, LA 70170-4300
Direct: 504-510-2508 Fax: 504-581-9591
Cell: 504-458-3056
E-MAIL: lwilliams@seismicexchange.com

Wayne Cook
Seitel
(985) 687-6467
wcook@Seitel.com



Merle J. Duplantis
Retired Explorationist
Call as needed
(504) 236-4650
merleduplantis@outlook.com

George Severson
Geological Consultant
New Orleans, LA

Work Phone: 504-394-0939
Mobile Phone: 504-352-0667



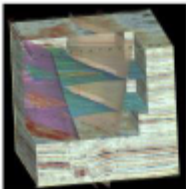
Apex Geophysical Services, Inc.

3337 N. Hullen St., Ste. 201

Metairie, La 70002

(O) 504-779-5006

(C) 504-231-2748



Richard D. Provensal
Richard@ApexGeophysical.com

CHAPTER CONTACTS

Chairman
Louis Lemarié 504-393-8659,
lemarie6@cox.net

Vice-Chairman
Cliff Williams
cliffwilliams1@me.com

Treasurer
Eric Broadbridge
eric@northcoastoil.com

Secretary,
Historical & Remembrances

Membership, Scott Wainright
scott_wainwright@hotmail.com

Website & Newsletter
Dave Broadbridge
david@kimsuol.com

Administrative Secretary
and Reservations
Carol St. Germain 504-267-3466
CarolA.StGermain@gmail.com
National SIPES Board

Chapter Representative

GEO-DRAFT, LLC

A Professional Drafting and Graphics Firm
Geological, Geophysical & Land Drafting
Courtroom & Legal Graphics

Anthony Catalanotto, Manager

**516 Maryland Avenue
Metairie, LA 70003
504-481-7291**

geodraft@bellsouth.

Newsletter Ad Rates

Sessions	September - December (4 issues) and January - May (5 issues)
Business Card	\$25 per session
1/4-page	\$100 per session
1/2-page	\$200 per session
Full page	\$400 per session
Non-member Business Card	\$50 per session
Send ad copy to	David Broadbridge, Editor dave@kimsuol.com
Send payment to	SIPES New Orleans Chapter PO Box 50088 New Orleans LA 70150-0088



Beacon Exploration

**Al Baker, Jr. Senior Explorationist
Abaker1006@aol.com**

**529 Solitude Way
Covington, LA 70433
504-460-3421**

Visit our SIPES New Orleans Chapter Website

**<http://www.sipesneworleans.org/>
Past Newsletters Calendar Photos Links
Consultants and Advertisers
David Broadbridge, Webmaster
david@kimsuol.com**