



New Orleans Chapter Newsletter

Society of Independent Professional Earth Scientists

September 2019

Prospects for Onshore & Offshore Production, Downstream Petrochemical & IMO 2020 market impacts & Offshore Guyana

Eric Smith

A.B. Freeman School of Business at Tulane University



Chairman's Column

We closed out last year's program with the annual May Dinner meeting at Andrea's attended by a record crowd of 72 members and guests. Everyone seemed to enjoy the libations, excellent food and low volume, live dinner music.

The meeting schedule will resume on Tuesday, Sept. 17th, at the regular venue, i.e. Andrea's. Prof. Eric Smith, with the Tulane Energy Institute, will be our speaker. He has spoken to our group numerous times and his talks have always been interesting and informative.

SIPESE National is currently putting together a photo directory and Eric B. will have his camera at the Sept. meeting for anyone who needs a picture.

On a sad note, Richard Seba, one of our long-time members, passed away on August 24, after a long fight with cancer. Richard was a "regular" at most meetings and his presence will be missed. Mark your calendars for the rest of this year; the meeting dates are;

September 17th
October 15th
November TBA
December 17th

As usual, first half dues notices have gone out (both digital and hard copy).....last years' response was excellent...keep up the trend!

CHAIRMAN'S COMMENTS:

Over the summer, oil prices have moved up and down in a \$10/B range, currently seeming to find a home in the mid-fifties area. Natural Gas, however, has been a "bummer," settling in the \$2.20 range. South LA continues to suffer from a lack of activity, with the weekly scout report on SON-RIS down to about 10 pages.

In a couple of months we will have an election for governor (among others). I urge you to look carefully at the candidates. The incumbent has championed "frivolous" lawsuits against energy companies at the urging of his trial lawyer backers,,,,, use your best judgment when you press the button!!

Louis E. Lemarié

Tuesday, September 17th

Andrea's - Metairie

Registration & Networking - 11:30 AM

Lunch and Talk - Noon

Reservations and guests: Carol St. Germain - 504-267-3466

Eric Smith is a Professor of Practice at the A.B. Freeman School of Business at Tulane University. He also serves as the Associate Director of the Tulane Energy Institute. In addition to teaching both undergraduate and graduate energy courses, he works with business and law professors on interdisciplinary projects and courses involving energy regulatory issues. He also works with the engineering and science school, engineering firms and with various regional teams focused on economic development.

He is a 1965 Chemical Engineering graduate of the Georgia Institute of Technology and earned an MBA, in 1967, from the A. B. Freeman School at Tulane University. In addition to fourteen years of full time academic/advisory experience, he has over thirty years of operational experience; first, in the downstream petrochemical industry and then, from 1984 until 2004, in the upstream drilling and construction sectors. During that time, he participated in arranging three IPOs, the largest being a combined primary-secondary offering for Saipem, SpA. He also was the head of Saipem's US subsidiary during the installation of Hoover-Diana, Exxon's first major deep water structure.

(Continued next page)

Eric has served as a consultant to Louisiana's Department of Economic Development as well as to Greater New Orleans, Inc. the regional economic development group. In addition, he is the Energy committee chairman of the World Trade Center of New Orleans. On occasion, he has also supported reverse trade missions involving energy options for Pakistan, South Africa, Nigeria and Ghana; all sponsored by the US Trade Development Agency. Most recently, he served as a consultant to the government of Guyana at the behest of the US Department of State. Finally, he acts as Tulane's media contact for energy issues.

He is author, or co-author, of reports on LNG, Natural Gas Liquids, changes in the onshore and offshore energy market, and Louisiana's relative competitiveness in industrial power generation, the use of petroleum coke as a fuel for the domestic power generation market. He has also authored a series of reports that deal with the economic impact of US shale oil and gas production on the Louisiana and Gulf Coast economies.



A significant current interest is the impact of burgeoning natural gas liquids production, a result of the shale oil and gas development, on the worldwide market for bulk plastics, primarily Polyethylene and PVC.

Visit our SIPES New Orleans Chapter Website

<http://www.sipesneworleans.org/>

Past Newsletters Calendar Photos Links

Consultants and Advertisers

David Broadbridge, Webmaster

david@kimsuoil.com



Randy M. Brunet CPA PFS

Registered Representative*

eltonfan@bfg.nocoxmail.com

TEL (504) 838-0227

FAX (504) 833-5217

446 Rosa Avenue
Metairie, LA 70005

*Securities offered through HD VEST INVESTMENT SERVICES, Member SIPC. Advisory Services Offered Through HD VEST ADVISORY SERVICES, 6333 North State Highway 161, Suite 400, Irving, TX 75038 | (972) 870-6000
Brunet Wealth Management is not a registered broker/dealer or independent investment advisory firm.

Investment Management | Cash Flow and Debt Management
Family Risk Management | Retirement Planning
Education Planning | Legacy Planning | Business Planning
Special Situations Planning

BrunetWealthManagement.com

CLIFFORD WILLIAMS & ASSOCIATES, LLC

Reservoir Engineering

Cliff Williams, P.E.

Principal

P. O. Box 1081

Mandeville, LA 70470

(985) 705-7552

cliffwilliams1@me.com

<https://www.linkedin.com/in/clifford-williams-p-e-88390222>

CLIFFORD WILLIAMS & ASSOCIATES, LLC

- Oil and Gas Asset Valuation
- Acquisitions and Divestitures
- Reserve Reporting
- Field Depletion Strategies
- Project Economics
- LOE and Downtime Reduction Assessments



Tim Klibert

Senior Vice President
Business Development and Strategy

711 West Tenth Street Reserve, Louisiana 70084

24-Hour Service: 1-800-280-2096

Fax: (985) 536-2427 Cell: (504) 451-9515

E-mail: tklibert@dwl-usa.com / Website: www.dwl-usa.net

New Orleans • Lafayette • Houston • Dallas • Corpus Christi • Appalachian



Seismic Exchange, Inc.

Dallas • Denver • Houston • New Orleans • Oklahoma City
Corpus Christi • Tulsa

Layne Williams

*New Orleans Region
Marketing Manager*

201 St. Charles Avenue, Suite 4300
New Orleans, LA 70170-4300
Direct: 504-510-2508 Fax: 504-581-9591
Cell: 504-458-3056
E-MAIL: lwilliams@seismicexchange.com

Wayne Cook
Seitel
(985) 687-6467
wcook@Seitel.com



Merle J. Duplantis
Retired Explorationist
Call as needed
(504) 236-4650
merleduplantis@outlook.com

George Severson
Geological Consultant
New Orleans, LA

Work Phone: 504-394-0939
Mobile Phone: 504-352-0667



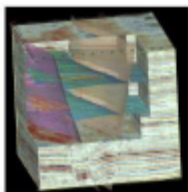
Apex Geophysical Services, Inc.

3337 N. Hullen St., Ste. 201

Metairie, La 70002

(O) 504-779-5006

(C) 504-231-2748



Richard D. Provensal
Richard@ApexGeophysical.com

CHAPTER CONTACTS

Chairman
Louis Lemarié 504-393-8659,
lemarie6@cox.net

Vice-Chairman
Cliff Williams
cliffwilliams1@me.com

Treasurer
Eric Broadbridge
eric@northcoastoil.com

Secretary,
Historical & Remembrances

Membership, Scott Wainright
scott_wainwright@hotmail.com

Website & Newsletter
Dave Broadbridge
david@kimsuol.com

Administrative Secretary
and Reservations
Carol St. Germain 504-267-3466
CarolA.StGermain@gmail.com
National SIPES Board

Chapter Representative

GEO-DRAFT, LLC

A Professional Drafting and Graphics Firm
Geological, Geophysical & Land Drafting
Courtroom & Legal Graphics

Anthony Catalanotto, Manager

**516 Maryland Avenue
Metairie, LA 70003
504-481-7291**

geodraft@bellsouth.net

Newsletter Ad Rates

Sessions	September - December (4 issues) and January - May (5 issues)
Business Card	\$25 per session
1/4-page	\$100 per session
1/2-page	\$200 per session
Full page	\$400 per session
Non-member Business Card	\$50 per session
Send ad copy to	David Broadbridge, Editor dave@kimsuoil.com
Send payment to	SIPES New Orleans Chapter PO Box 50088 New Orleans LA 70150-0088



Beacon Exploration

Al Baker, Jr. Senior Explorationist
Abaker1006@aol.com

**529 Solitude Way
Covington, LA 70433
504-460-3421**

Visit our SIPES New Orleans Chapter Website

<http://www.sipesneworleans.org/>
Past Newsletters Calendar Photos Links
Consultants and Advertisers
David Broadbridge, Webmaster
david@kimsuoil.com