



New Orleans Chapter Newsletter

Society of Independent Professional Earth Scientists
February 2020

Gulf Coast Energy Outlook

Gregory B. Upton, Jr.

Louisiana State University Center for Energy Studies



Chairman's Column

At last month's meeting, 32 members and guests heard a very interesting and informative talk by Steve Maley, one of our local members. Steve's talk illustrated how new technology can drastically change projected estimates.

This month we will hear from Dr. Greg Upton, with the Center for Energy Studies at L.S.U.

Andrea's has finally gotten around to raising their prices for our meetings. We will go from \$23/person to \$26.50, but considering what we get, with no parking fee, this is still an excellent "deal". While we do not have to give a guarantee for each meeting (except the May dinner), it is important to have a "head count" in advance, so try and let Carol know if you plan to attend each meeting.

Chapter dues for this session are now "past due", so check your records and make sure you are not one of the missing! Unfortunately this is the time when local and national dues overlap, but full and limited members must be national members to belong to a local chapter.

Chairman's Comments

Energy prices have been retreating over the past month, with oil in the low to mid-fifties. Natural gas has gone below \$2 and with the end to cold weather starting, the outlook is grim.

South Louisiana remains in the doldrums; last week's Lafayette Scout report listed 49 wells but only 5 reported as drilling. A number of factors have led to the decline and obviously all of them are not going to change "overnight"; but, hopefully we will see some positive movement this year!

Louis E. Lemarié

Tuesday, February 18th

Andrea's - Metairie

Registration & Networking - 11:30 AM

Lunch and Talk - Noon

Reservations and guests: Carol St. Germain - 504-267-3466

Greg Upton is Assistant Research Professor at the Louisiana State University Center for Energy Studies. His research interests are related to the analysis of economic, environmental and public policy issues in the energy industry.

During his tenure at LSU, Dr. Upton has addressed a number of topical energy issues of significance to Louisiana, including the impact of the oil price collapse on Louisiana's budgetary challenges, solar tax credits and net metering policies, and implications of the crude oil export ban's lifting on the Louisiana economy, among others. He is author of the chapter entitled "Mineral Revenues in Louisiana" in the book "Exploring Long-Term Solutions for Louisiana's Tax System." He has presented research on these topics to more than 80 industry, governmental and academic audiences, and has been cited more than fifty times in local and national media including the Wall Street Journal. He has written guest columns about energy related issues affecting Louisiana appearing in the Baton Rouge, New Orleans and Acadiana Advocate, Baton Rouge Business Report, New Orleans' TimesPicayune, Lafayette's Daily Advertiser, and Public Utilities Fortnightly Magazine.

Dr. Upton holds a Ph.D. in Economics from Louisiana State University where he also received both an M.A. in economics and a B.S. in economics with a concentration in empirical analysis. He is a member of professional organizations such as the American Economic Association (AEA), International Association of Energy Economics (IAEE), and the Southern Economic Association (SEA). He has taught courses the Department of Environmental Sciences and Department of Economics at LSU and is a program faculty member at Michigan State University's Institute of Public Utilities.



Randy M. Brunet CPA PFS

Registered Representative*

eltonfan@bfg.nocoxmail.com

TEL (504) 838-0227

FAX (504) 833-5217

446 Rosa Avenue
Metairie, LA 70005

*Securities offered through HD VEST INVESTMENT SERVICES, Member SIPC. Advisory Services Offered Through HD VEST ADVISORY SERVICES, 6333 North State Highway 161, Suite 400, Irving, TX 75038 | (972) 870-6000
Brunet Wealth Management is not a registered broker/dealer or independent investment advisory firm.

Investment Management | Cash Flow and Debt Management
Family Risk Management | Retirement Planning
Education Planning | Legacy Planning | Business Planning
Special Situations Planning

BrunetWealthManagement.com

CLIFFORD WILLIAMS & ASSOCIATES, LLC

Reservoir Engineering

Cliff Williams, P.E.

Principal

P. O. Box 1081

Mandeville, LA 70470

(985) 705-7552

cliffwilliams1@me.com

<https://www.linkedin.com/in/clifford-williams-p-e-88390222>

CLIFFORD WILLIAMS & ASSOCIATES, LLC

- Oil and Gas Asset Valuation
- Acquisitions and Divestitures
- Reserve Reporting
- Field Depletion Strategies
- Project Economics
- LOE and Downtime Reduction Assessments



Tim Klibert

Senior Vice President
Business Development and Strategy

711 West Tenth Street Reserve, Louisiana 70084

24-Hour Service: 1-800-280-2096

Fax: (985) 536-2427 Cell: (504) 451-9515

E-mail: tklibert@dwl-usa.com / Website: www.dwl-usa.net

New Orleans • Lafayette • Houston • Dallas • Corpus Christi • Appalachian



Seismic Exchange, Inc.

Dallas • Denver • Houston • New Orleans • Oklahoma City
Corpus Christi • Tulsa

Layne Williams

*New Orleans Region
Marketing Manager*

201 St. Charles Avenue, Suite 4300
New Orleans, LA 70170-4300
Direct: 504-510-2508 Fax: 504-581-9591
Cell: 504-458-3056
E-MAIL: lwilliams@seismicexchange.com

Wayne Cook
Seitel
(985) 687-6467
wcook@Seitel.com



Merle J. Duplantis
Retired Explorationist
Call as needed
(504) 236-4650
merleduplantis@outlook.com

George Severson
Geological Consultant
New Orleans, LA

Work Phone: 504-394-0939
Mobile Phone: 504-352-0667



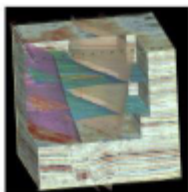
Apex Geophysical Services, Inc.

3337 N. Hullen St., Ste. 201

Metairie, La 70002

(O) 504-779-5006

(C) 504-231-2748



Richard D. Provensal
Richard@ApexGeophysical.com

CHAPTER CONTACTS

Chairman
Louis Lemarié 504-393-8659,
lemarie6@cox.net

Vice-Chairman
Cliff Williams
cliffwilliams1@me.com

Treasurer
Eric Broadbridge
eric@northcoastoil.com

Secretary,
Historical & Remembrances

Membership, Scott Wainright
scott_wainwright@hotmail.com

Website & Newsletter
Dave Broadbridge
david@kimsuol.com

Administrative Secretary
and Reservations
Carol St. Germain 504-267-3466
CarolA.StGermain@gmail.com
National SIPES Board

Chapter Representative

GEO-DRAFT, LLC

A Professional Drafting and Graphics Firm
Geological, Geophysical & Land Drafting
Courtroom & Legal Graphics

Anthony Catalanotto, Manager

**516 Maryland Avenue
Metairie, LA 70003
504-481-7291**

geodraft@bellsouth.

Newsletter Ad Rates

Sessions	September - December (4 issues) and January - May (5 issues)
Business Card	\$25 per session
1/4-page	\$100 per session
1/2-page	\$200 per session
Full page	\$400 per session
Non-member Business Card	\$50 per session
Send ad copy to	David Broadbridge, Editor dave@kimsuol.com
Send payment to	SIPES New Orleans Chapter PO Box 50088 New Orleans LA 70150-0088



Beacon Exploration

**Al Baker, Jr. Senior Explorationist
Abaker1006@aol.com**

**529 Solitude Way
Covington, LA 70433
504-460-3421**

Visit our SIPES New Orleans Chapter Website

**<http://www.sipesneworleans.org/>
Past Newsletters Calendar Photos Links
Consultants and Advertisers
David Broadbridge, Webmaster
david@kimsuol.com**