



New Orleans Chapter Newsletter

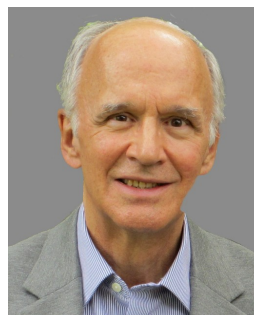
Society of Independent Professional Earth Scientists

March 2020

Climate Change: A Technical Perspective

James D. Robertson

Salt Creek Petroleum, LLC



Chairman's Column

Where were you? Last month's meeting had the lowest attendance in recent memory, with only 23 members and guests present. The speaker, Greg Upton gave an interesting and informative presentation. The both the food and service were excellent, and the weather, while not perfect, was not bad. Maybe some of you had a premonition about coronavirus and wanted to avoid crowds!

This month our speaker, James Robertson, a SIPES member from Fort Worth, will delve into climate change, looking at various sides of the issue.

Looking ahead, next month (April 21) we will hold the 5th annual membership/crawfish boil at the Harbor Bar and Grill on 17th Street, just down the street from Andrea's.

A few of you are still missing in dues collection. Please check to make sure you are current.

Chairman's Column

What a chaotic month! Energy prices slumped along with the stock market and other economic factors in the wake of the virus hysteria.

Oil is below \$50 and natural gas is below \$2. Hopefully this is the floor and future movement will be up! I seem to remember an old saying that "this too will pass".

Louis E. Lemarié

Tuesday, March 17th
Andrea's - Metairie

Registration & Networking - 11:30 AM

Lunch and Talk - Noon

Reservations and guests: Carol St. Germain - 504-267-3466

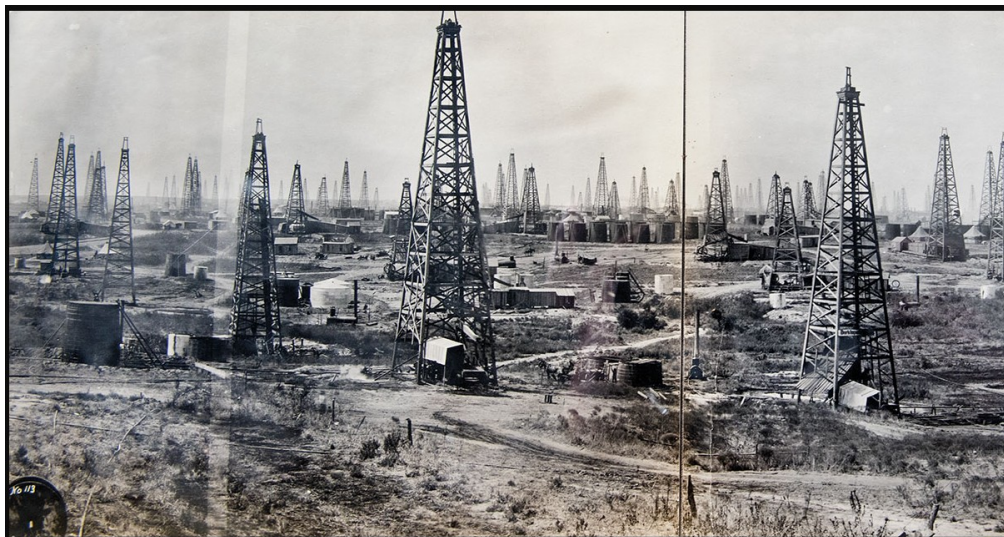
James D. (Jamie) Robertson is a partner in Salt Creek Petroleum LLC, an independent oil and gas company active in exploration and production in onshore Texas. Prior to becoming an independent, he worked for Atlantic Richfield Company (ARCO) for 25 years, retiring as exploration vice president of ARCO's international division when ARCO merged with BP plc in the year 2000. He is a past president (1994-95) and honorary member of the Society of Exploration Geophysicists, a three-time winner of best paper awards in SEG journals and annual meetings, a founding member and past chair of the Fort Worth Chapter of SIPES and a licensed professional geoscientist in the state of Texas. Jamie received a B.S.E. in geological engineering from Princeton University and a Ph.D. in geophysics from the University of Wisconsin.

Abstract

Climate is constantly changing at many time scales from millions of years to decades. The drivers range from the long-term impacts of plate tectonics and orbital oscillations to the shorter-term impacts of solar radiation and volcanic activity. Many diverse datasets converge to show that earth's climate is currently warming; average global surface air temperature on land, for example, is 3o F warmer presently than in the late 1800s. Direct measurements also show that greenhouse gas concentrations in the atmosphere have increased in recent time; carbon dioxide (CO₂) concentration, for example, is more than 35% higher presently than in the late 1800s. There are no significant natural sources of this rise in CO₂. The sources virtually all relate to human activity: electric power plants, transportation, cement plants, residential and commercial heating, agriculture and landfills. Is this rise in CO₂ the probable cause of the current climate warming? (see next page)

(Continued from Page 1)

Multiple lines of evidence suggest yes: (1) the greenhouse effect is established science; (2) directly measured heat exchange at various levels in the atmosphere demonstrates increasing net warming over time consistent with an increasing greenhouse effect; (3) the troposphere is heating while the stratosphere is cooling consistent with an increasing greenhouse effect (if solar radiation was the cause, both would be heating); (4) nights are warming faster than days and winters warming faster than summers, also a fingerprint of a greenhouse cause rather than a solar radiation cause; and (5) climate simulation models as they improve are supporting the CO₂ to climate warming link. Hypotheses that climate warming over the past century is all natural (caused by solar radiation changes, volcanic activity, jet stream and ocean current fluctuations and the like) are not supported by scientific data, though these natural drivers do have discernible impacts over short time spans





Randy M. Brunet CPA PFS

Registered Representative*

eltonfan@bfg.nocoxmail.com

TEL (504) 838-0227

FAX (504) 833-5217

446 Rosa Avenue
Metairie, LA 70005

*Securities offered through HD VEST INVESTMENT SERVICES, Member SIPC. Advisory Services Offered Through HD VEST ADVISORY SERVICES, 6333 North State Highway 161, Suite 400, Irving, TX 75038 | (972) 870-6000
Brunet Wealth Management is not a registered broker/dealer or independent investment advisory firm.

Investment Management | Cash Flow and Debt Management
Family Risk Management | Retirement Planning
Education Planning | Legacy Planning | Business Planning
Special Situations Planning

BrunetWealthManagement.com

CLIFFORD WILLIAMS & ASSOCIATES, LLC

Reservoir Engineering

Cliff Williams, P.E.

Principal

P. O. Box 1081

Mandeville, LA 70470

(985) 705-7552

cliffwilliams1@me.com

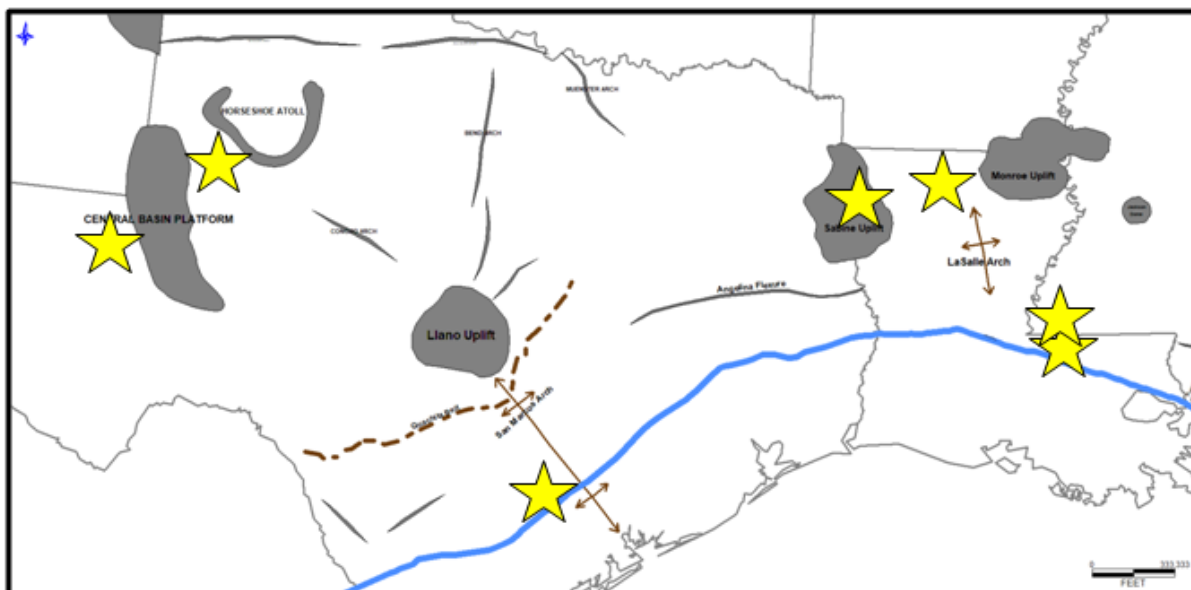
<https://www.linkedin.com/in/clifford-williams-p-e-88390222>

CLIFFORD WILLIAMS & ASSOCIATES, LLC

- Oil and Gas Asset Valuation
- Acquisitions and Divestitures
- Reserve Reporting
- Field Depletion Strategies
- Project Economics
- LOE and Downtime Reduction Assessments



TMS - PERMIAN - EAGLE FORD - AUSTIN CHALK - HAYNESVILLE



www.ameliareources.com

tuscaloosatrend.blogspot.com



SEI® Seismic Exchange, Inc.

Dallas • Denver • Houston • New Orleans • Oklahoma City
Corpus Christi • Tulsa

Layne Williams
New Orleans Region
Marketing Manager

201 St. Charles Avenue, Suite 4300
New Orleans, LA 70170-4300
Direct: 504-510-2508 Fax: 504-581-9591
Cell: 504-458-3056
E-MAIL: lwilliams@seismicexchange.com

Merle J. Duplantis
Retired Explorationist
Call as needed
(504) 236-4650

merleduplantis@outlook.com



Beacon Exploration

Al Baker, Jr. Senior Explorationist
Abaker1006@aol.com

529 Solitude Way
Covington, LA 70433
504-460-3421



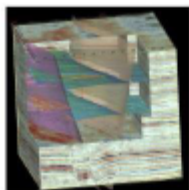
Apex Geophysical Services, Inc.

3337 N. Hullen St., Ste. 201

Metairie, La 70002

(O) 504-779-5006

(C) 504-231-2748



Richard D. Provensal
Richard@ApexGeophysical.com

GEO-DRAFT, LLC

A Professional Drafting and Graphics Firm
Geological, Geophysical & Land Drafting
Courtroom & Legal Graphics

Anthony Catalanotto, Manager

516 Maryland Avenue
Metairie, LA 70003
504-481-7291

geodraft@bellsouth.

Newsletter Ad Rates

Sessions	September - December (4 issues) and January - May (5 issues)
Business Card	\$25 per session
1/4-page	\$100 per session
1/2-page	\$250 per session
Full page	\$400 per session
Non-member Business Card	\$50 per session
Send ad copy to	David Broadbridge, Editor david@kimsuol.com
Send payment to	SIPES New Orleans Chapter PO Box 50088

CHAPTER CONTACTS

Chairman

Louis Lemarié 504-393-8659,
lemarie6@cox.net

Vice-Chairman

Cliff Williams
cliffwilliams1@me.com

Treasurer

Eric Broadbridge
eric@northcoastoil.com

Secretary,

Historical & Remembrances

Membership, Scott Wainright
scott_wainwright@hotmail.com

Website & Newsletter

Dave Broadbridge
david@kimsuol.com

Administrative Secretary and Reservations

Carol St. Germain 504-267-3466
CarolA.StGermain@gmail.com
National SIPES Board

Chapter Representative

Visit our SIPES New Orleans Chapter Website

<http://www.sipesneworleans.org/>
Past Newsletters Calendar Photos Links
Consultants and Advertisers

David Broadbridge, Webmaster
david@kimsuol.com