



## Chairman's Column

*Merry Christmas  
and  
Happy New Year!*

*Louis E. Lemarié*

**New Orleans Chapter Newsletter**  
Society of Independent Professional Earth Scientists  
December 2021



**Tuesday, December 21st**  
**Andrea's - Metairie**

**Registration & Networking - 11:15 AM**

**(note the longer "cocktail time"**

**Lunch and Open Mic - Noon**

**Reservations and guests: Carol St. Germain - 504-267-3466**



# BRUNET

WEALTH MANAGEMENT

- EST 1984 -

**Randy M. Brunet CPA PFS**

Registered Representative\*

[eltonfan@bfg.nocoxmail.com](mailto:eltonfan@bfg.nocoxmail.com)

TEL (504) 838-0227

FAX (504) 833-5217

446 Rosa Avenue  
Metairie, LA 70005

\*Securities offered through HD VEST INVESTMENT SERVICES, Member SIPC | Advisory Services Offered Through HD VEST ADVISORY SERVICES, 6333 North State Highway 161, Suite 400, Irving, TX 75038 | (972) 870-6000  
Brunet Wealth Management is not a registered broker/dealer or independent investment advisory firm.

Investment Management | Cash Flow and Debt Management  
Family Risk Management | Retirement Planning  
Education Planning | Legacy Planning | Business Planning  
Special Situations Planning

[BrunetWealthManagement.com](http://BrunetWealthManagement.com)

## CLIFFORD WILLIAMS & ASSOCIATES, LLC

Reservoir Engineering

**Cliff Williams, P.E.**

Principal

P. O. Box 1081

Mandeville, LA 70470

(985) 705-7552

[cliffwilliams1@me.com](mailto:cliffwilliams1@me.com)

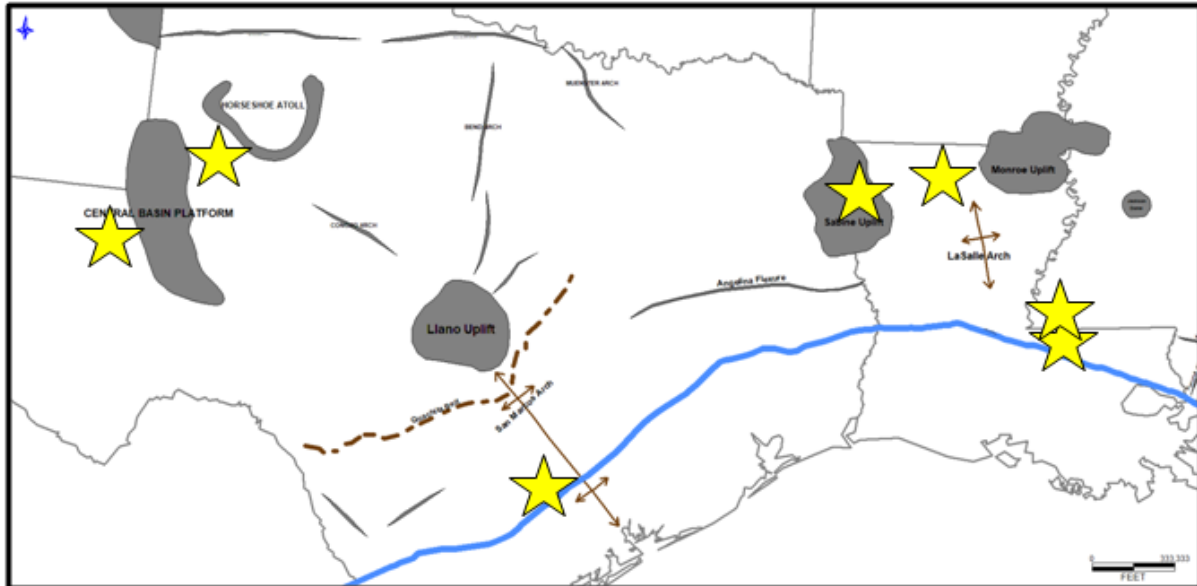
<https://www.linkedin.com/in/clifford-williams-p-e-88390222>

### CLIFFORD WILLIAMS & ASSOCIATES, LLC

- Oil and Gas Asset Valuation
- Acquisitions and Divestitures
- Reserve Reporting
- Field Depletion Strategies
- Project Economics
- LOE and Downtime Reduction Assessments



**TMS - PERMIAN - EAGLE FORD - AUSTIN CHALK - HAYNESVILLE**



[www.ameliareources.com](http://www.ameliareources.com)

[tuscaloosatrend.blogspot.com](http://tuscaloosatrend.blogspot.com)



**Seismic Exchange, Inc.**

Dallas • Denver • Houston • New Orleans • Oklahoma City  
Corpus Christi • Tulsa

**Layne Williams**  
New Orleans Region  
Marketing Manager

201 St. Charles Avenue, Suite 4300  
New Orleans, LA 70170-4300  
Direct: 504-510-2508 Fax: 504-581-9591  
Cell: 504-458-3056  
E-MAIL: [lwilliams@seismicexchange.com](mailto:lwilliams@seismicexchange.com)

**Merle J. Duplantis**  
Retired Explorationist  
Call as needed  
**(504) 236-4650**  
[merleduplantis@outlook.com](mailto:merleduplantis@outlook.com)



# LaBay

**Exploration Co., L.L.C.**

1070 A West Causeway Approach  
Mandeville, Louisiana 70471

Office (985) 951-2012  
Fax (985) 951-2055

[www.labayexploration.com](http://www.labayexploration.com)



## Beacon Exploration

**Al Baker, Jr. Senior Explorationist**  
[Abaker1006@aol.com](mailto:Abaker1006@aol.com)

**529 Solitude Way**  
**Covington, LA 70433**  
**504-460-3421**



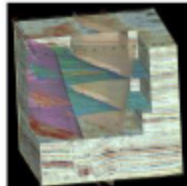
**Apex Geophysical Services, Inc.**

**3337 N. Hullen St., Ste. 201**

**Metairie, La 70002**

**(O) 504-779-5006**

**(C) 504-231-2748**



**Richard D. Provensal**  
**[Richard@ApexGeophysical.com](mailto:Richard@ApexGeophysical.com)**

## Newsletter Ad Rates

Sessions	September - December (4 issues) and January - May (5 issues)
Business Card	\$25 per session
1/4-page	\$100 per session
1/2-page	\$250 per session
Full page	\$400 per session
Non-member Business Card	\$50 per session
Send ad copy to	David Broadbridge, Editor david@kimsuoil.com
Send payment to	SIPES New Orleans Chapter PO Box 50088

## CHAPTER CONTACTS

Chairman  
Louis Lemarié 504-393-8659,  
lemarie6@cox.net

Vice-Chairman  
Cliff Williams  
cliffwilliams1@me.com

Treasurer  
Eric Broadbridge  
eric@northcoastoil.com

Secretary,  
Historical & Remembrances

Membership, Scott Wainright  
scott\_wainwright@hotmail.com

**Website & Newsletter**  
**Dave Broadbridge**  
**david@kimsuoil.com**

Administrative Secretary  
and Reservations  
Carol St. Germain 504-267-3466  
CarolA.StGermain@gmail.com  
National SIPES Board

Chapter Representative

## Visit our SIPES New Orleans Chapter Website

<http://www.sipesneworleans.org/>  
Past Newsletters Calendar Photos Links  
Consultants and Advertisers

David Broadbridge, Webmaster  
david@kimsuoil.com