



## Chairman's Column

We welcome Robert Meltz to speak at our October meeting. Hope to see everyone there!

*Louis E. Lemarié*

# New Orleans Chapter Newsletter

Society of Independent Professional Earth Scientists  
October 2022

## Robert Meltz

Petroleum Geologist, Retired - Chevron

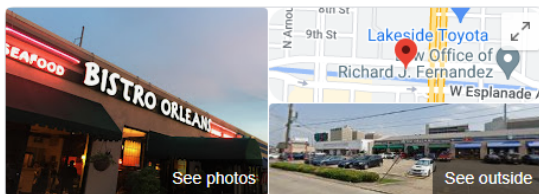
"Gulf of Mexico oil and gas production: Historical trends with a focus on the Wilcox, and a few thoughts on the future"



## Thursday, October 20th Bistro Orleans - Metairie

**Social 11:30 AM Lunch 12 Noon**

**Reservations and guests: Carol St. Germain - 504-267-3466**



### Bistro Orleans



[Website](#) [Directions](#) [Save](#) [Call](#)

4.3 ★★★★★ 353 Google reviews

\$\$ · Bistro

[ORDER DELIVERY](#)

**Service options:** Dine-in · Takeout · No-contact delivery

**Address:** 3216 W Esplanade Ave, Metairie, LA 70002

**Hours:** Closed · Opens 11AM ▾

**Menu:** [places.singleplatform.com](#)

**Phone:** (504) 304-1469

### Bob Meltz Bio:

Bob Meltz retired in 2020 as a petroleum geologist with 38 years in the industry, starting with Texaco in 1982 and continuing with Chevron after their merger in 2001. He has exploration and development experience in many of the onshore and offshore trends of the northern Gulf of Mexico.

Bob earned a B.S. in Geology in 1980 from the University of Wisconsin at Oshkosh, and a M.S. in Geology from Northern Illinois University in 1982.

# BRUNET

WEALTH MANAGEMENT

- EST 1984 -

**Randy M. Brunet CPA PFS**

Registered Representative\*  
*rltonfan@bfg.nocoxmail.com*

TEL (504) 838-0227

FAX (504) 833-5217

446 Rosa Avenue  
Metairie, LA 70005

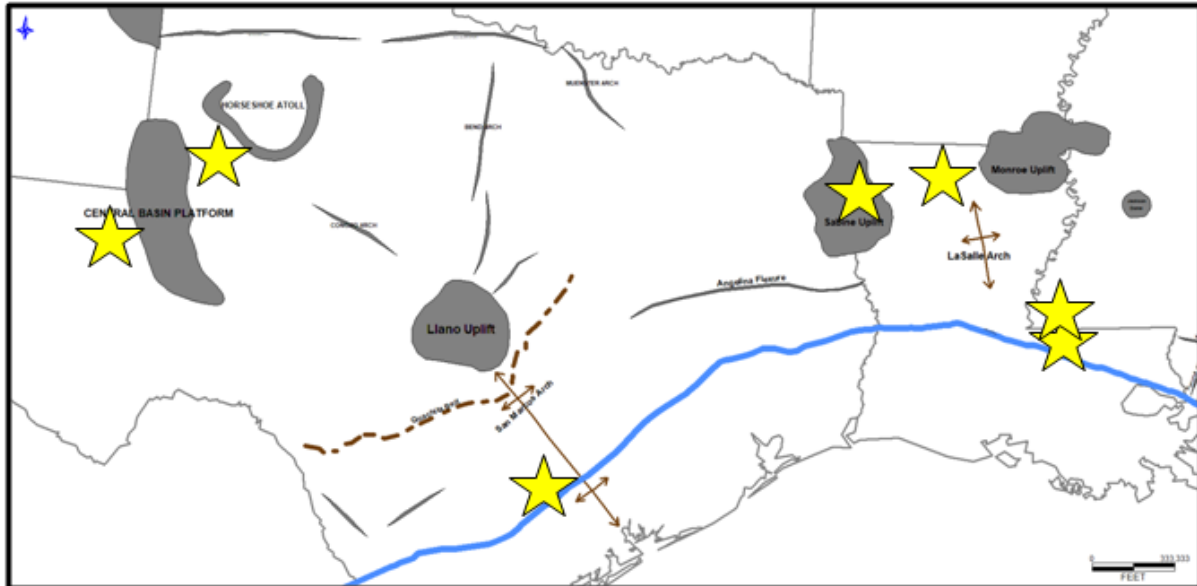
\*Securities offered through HD VEST INVESTMENT SERVICES, Member SIPC | Advisory Services Offered Through HD VEST ADVISORY SERVICES, 6333 North State Highway 161, Suite 400, Irving, TX 75038 | (972) 870-0000  
Brunet Wealth Management is not a registered broker/dealer or independent investment advisory firm.

Investment Management | Cash Flow and Debt Management  
Family Risk Management | Retirement Planning  
Education Planning | Legacy Planning | Business Planning  
Special Situations Planning

[BrunetWealthManagement.com](http://BrunetWealthManagement.com)



**TMS - PERMIAN - EAGLE FORD - AUSTIN CHALK - HAYNESVILLE**



[www.ameliarresources.com](http://www.ameliarresources.com)

[tuscaloosatrend.blogspot.com](http://tuscaloosatrend.blogspot.com)



**SEI** Seismic Exchange, Inc.

Dallas • Denver • Houston • New Orleans • Oklahoma City  
Corpus Christi • Tulsa

**Layne Williams**  
New Orleans Region  
Marketing Manager

201 St. Charles Avenue, Suite 4300  
New Orleans, LA 70170-4300  
Direct: 504-510-2508 Fax: 504-581-9591  
Cell: 504-458-3056  
E-MAIL: [lwilliams@seismicexchange.com](mailto:lwilliams@seismicexchange.com)

**Merle J. Duplantis**  
Retired Explorationist  
Call as needed  
**(504) 236-4650**  
[merleduplantis@outlook.com](mailto:merleduplantis@outlook.com)



# LaBay

Exploration Co., L.L.C.

1070 A West Causeway Approach  
Mandeville, Louisiana 70471

Office (985) 951-2012  
Fax (985) 951-2055

[www.labayexploration.com](http://www.labayexploration.com)



## Beacon Exploration

**Al Baker, Jr. Senior Explorationist**  
[Abaker1006@aol.com](mailto:Abaker1006@aol.com)

**529 Solitude Way**  
**Covington, LA 70433**  
**504-460-3421**



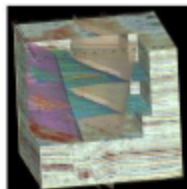
**Apex Geophysical Services, Inc.**

**3337 N. Hullen St., Ste. 201**

**Metairie, La 70002**

**(O) 504-779-5006**

**(C) 504-231-2748**



**Richard D. Provensal**  
[Richard@ApexGeophysical.com](mailto:Richard@ApexGeophysical.com)

## Newsletter Ad Rates

|                          |   |
|--------------------------|---|
| Sessions                 | September - December (4 issues) and<br>January - May (5 issues) |
| Business Card            | \$25 per session  |
| 1/4-page                 | \$100 per session   |
| 1/2-page                 | \$250 per session   |
| Full page                | \$400 per session   |
| Non-member Business Card | \$50 per session  |
| Send ad copy to          | David Broadbridge, Editor<br>david@kimsuoil.com                 |
| Send payment to          | SIPES New Orleans Chapter<br>PO Box 50088                       |

## CHAPTER CONTACTS

Chairman  
Louis Lemarié 504-393-8659,  
lemarie6@cox.net

Vice-Chairman  
Cliff Williams  
cliffwilliams1@me.com

Treasurer  
Eric Broadbridge  
eric@northcoastoil.com

Secretary,  
Historical & Remembrances

Membership, Scott Wainright  
scott\_wainwright@hotmail.com

**Website & Newsletter**  
**Dave Broadbridge**  
**david@kimsuoil.com**

Administrative Secretary  
and Reservations  
Carol St. Germain 504-267-3466  
CarolA.StGermain@gmail.com  
National SIPES Board

Chapter Representative

## Visit our SIPES New Orleans Chapter Website

<http://www.sipesneworleans.org/>  
Past Newsletters Calendar Photos Links  
Consultants and Advertisers

David Broadbridge, Webmaster  
david@kimsuoil.com