



Chairman's Column

We welcome Eric D. Scott to speak at our January meeting.
Hope to see everyone there!

Louis E. Lemarié

Abstract

Sites ~60 miles south of Houston along ~35 miles of the SE Texas coastline provide excellent locations to observe coastal sedimentological processes and their resultant deposits. This section of the Texas coast is characterized by barrier islands separated by tidal inlets and river outlets. The larger, sand-ridge cored, prograding Galveston Island contrasts with the smaller, wash-over dominated, retreating Follets Island and is separated by the stable, long-lived San Luis Pass that exhibits well developed flood and ebb tide delta systems. The Brazos River empties into the Gulf of Mexico to the south of Follets Island and forms a wave-dominated delta system. The Brazos River Delta has undergone significant changes due to human intervention and demonstrates the dynamic nature of sediment movement and deposition along the coast. The section of the coast provides insight into the mechanisms of sediment movement and the resultant reservoir characteristics of clastic coastal deposits that can be applied as an analog for subsurface exploration and production.

Erik D. Scott is the Chief Geologist for Vecta Oil & Gas based in the Woodlands, Texas generating conventional prospects along the Gulf Coast and across the continental US with collaborative companies including Southern Star Exploration. Over his career, he has worked on a wide variety of exploration and production projects as a sedimentological specialist in onshore and offshore Gulf of Mexico, North Sea, offshore West Africa, Southeast Asia, North and South America and the eastern Mediterranean. Erik is an Adjunct Professor at Rice University where he teaches seismic interpretation and clastic sedimentology. He received a Ph.D. in Geology from Louisiana State University, studying under Dr. Arnold H. Bouma, with whom he investigated the influence of tectonics and structure on deep water sedimentation based on the turbidite outcrops in the Karoo Basin of South Africa.

New Orleans Chapter Newsletter

Society of Independent Professional Earth Scientists
January 2023

Erik D. Scott, Ph.D.

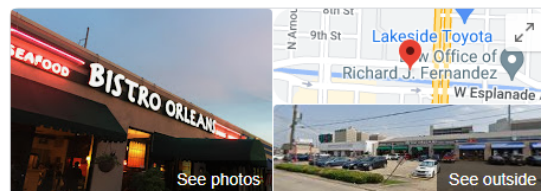
Texas Coastal Processes-Brazos River Delta to Galveston Island



Thursday, January 19th Bistro Orleans - Metairie

Social 11:30 AM Lunch 12 Noon

Reservations and guests: Carol St. Germain - 504-267-3466



Bistro Orleans

[Website](#) [Directions](#) [Save](#) [Call](#)

4.3 ★★★★★ 353 Google reviews

\$\$ · Bistro

[ORDER DELIVERY](#)

Service options: Dine-in · Takeout · No-contact delivery

Address: 3216 W Esplanade Ave, Metairie, LA 70002

Hours: Closed · Opens 11AM ▾

Menu: places.singleplatform.com

Phone: (504) 304-1469

BRUNET

WEALTH MANAGEMENT

- EST 1984 -

Randy M. Brunet CPA PFS

Registered Representative*
rltonfan@bfg.nocoxmail.com

TEL (504) 838-0227

FAX (504) 833-5217

446 Rosa Avenue
Metairie, LA 70005

*Securities offered through HD VEST INVESTMENT SERVICES, Member SIPC | Advisory Services Offered Through HD VEST ADVISORY SERVICES, 6333 North State Highway 161, Suite 400, Irving, TX 75038 | (972) 870-0000
Brunet Wealth Management is not a registered broker/dealer or independent investment advisory firm.

Investment Management | Cash Flow and Debt Management
Family Risk Management | Retirement Planning
Education Planning | Legacy Planning | Business Planning
Special Situations Planning

BrunetWealthManagement.com



LaBay

Exploration Co., L.L.C.

1070 A West Causeway Approach
Mandeville, Louisiana 70471

Office (985) 951-2012
Fax (985) 951-2055

www.labayexploration.com

Merle J. Duplantis
Retired Explorationist

Call as needed

(504) 236-4650

merleduplantis@outlook.com

Wayne Cook
Seitel

Newsletter Ad Rates

| | |
|--------------------------|---|
| Sessions | September - December (4 issues) and January - May (5 issues) |
| Business Card | \$25 per session |
| 1/4-page | \$100 per session |
| 1/2-page | \$250 per session |
| Full page | \$400 per session |
| Non-member Business Card | \$50 per session |
| Send ad copy to | David Broadbridge, Editor david@kimsuoil.com |
| Send payment to | SIPES New Orleans Chapter PO Box 50088 |

CHAPTER CONTACTS

Chairman
Louis Lemarié 504-393-8659,
lemarie6@cox.net

Vice-Chairman
Cliff Williams
cliffwilliams1@me.com

Treasurer
Eric Broadbridge
eric@northcoastoil.com

Secretary,
Historical & Remembrances

Membership, Scott Wainright
scott_wainwright@hotmail.com

Website & Newsletter
Dave Broadbridge
david@kimsuoil.com

Administrative Secretary
and Reservations
Carol St. Germain 504-267-3466
CarolA.StGermain@gmail.com
National SIPES Board

Chapter Representative

Visit our SIPES New Orleans Chapter Website

<http://www.sipesneworleans.org/>
Past Newsletters Calendar Photos Links
Consultants and Advertisers

David Broadbridge, Webmaster
david@kimsuoil.com