



New Orleans Chapter Newsletter
Society of Independent Professional Earth Scientists
October 2021

No Speaker

30 minute social with free drink

Chairman's Column

We have checked with Andrea's Restaurant and they will be able to accommodate us for our meeting on the 19th of October.

Our speaker for October had to cancel due to storm related issues. So we will not have a speaker.

Instead we plan to have a social 30 minutes with one free drink ticket before lunch.

Please respond to the poll below to let us know if you will attend. Please be accurate as we have to make a guarantee with Andrea's.

[October 19, Lunch Reservation Poll](#)

Louis E. Lemarié

Tuesday, October 19th
Andrea's - Metairie

Social 11:30 AM Lunch 12 Noon

Reservations and guests: Carol St. Germain - 504-267-3466



BRUNET

WEALTH MANAGEMENT

- EST 1984 -

Randy M. Brunet CPA PFS

Registered Representative*

eltonfan@bfg.nocoxmail.com

TEL (504) 838-0227

FAX (504) 833-5217

446 Rosa Avenue
Metairie, LA 70005

*Securities offered through HD VEST INVESTMENT SERVICES, Member SIPC | Advisory Services Offered Through HD VEST ADVISORY SERVICES, 6333 North State Highway 161, Suite 400, Irving, TX 75038 | (972) 870-6000
Brunet Wealth Management is not a registered broker/dealer or independent investment advisory firm.

Investment Management | Cash Flow and Debt Management
Family Risk Management | Retirement Planning
Education Planning | Legacy Planning | Business Planning
Special Situations Planning

BrunetWealthManagement.com

CLIFFORD WILLIAMS & ASSOCIATES, LLC

Reservoir Engineering

Cliff Williams, P.E.

Principal

P. O. Box 1081

Mandeville, LA 70470

(985) 705-7552

cliffwilliams1@me.com

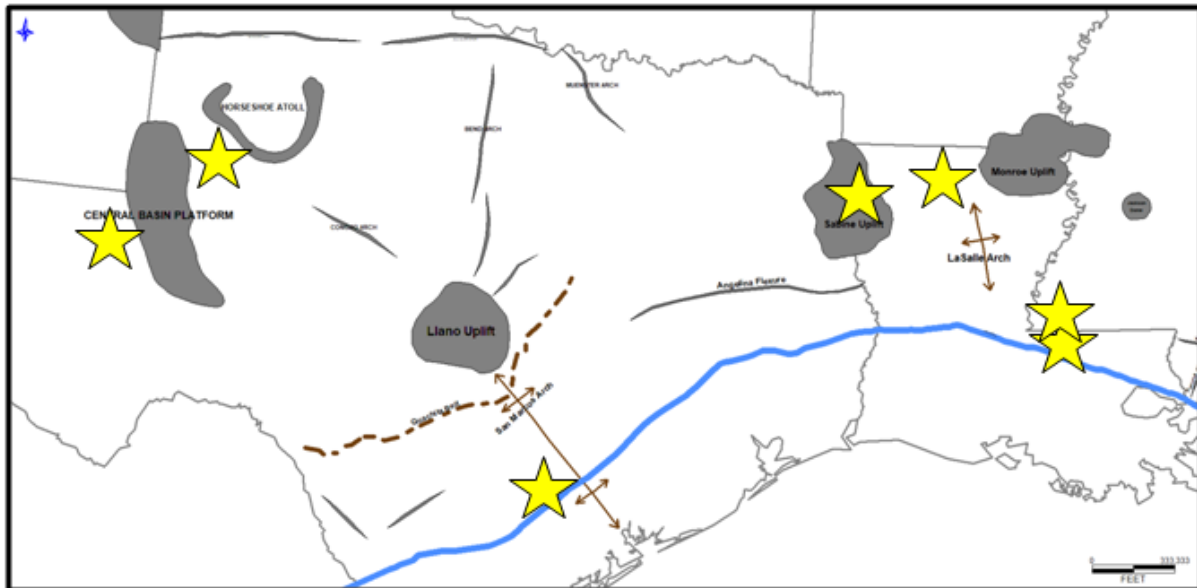
<https://www.linkedin.com/in/clifford-williams-p-e-88390222>

CLIFFORD WILLIAMS & ASSOCIATES, LLC

- Oil and Gas Asset Valuation
- Acquisitions and Divestitures
- Reserve Reporting
- Field Depletion Strategies
- Project Economics
- LOE and Downtime Reduction Assessments



TMS - PERMIAN - EAGLE FORD - AUSTIN CHALK - HAYNESVILLE



www.ameliareources.com

tuscaloosatrend.blogspot.com



Dallas • Denver • Houston • New Orleans • Oklahoma City
Corpus Christi • Tulsa

Layne Williams
New Orleans Region
Marketing Manager

201 St. Charles Avenue, Suite 4300
New Orleans, LA 70170-4300
Direct: 504-510-2508 Fax: 504-581-9591
Cell: 504-458-3056
E-MAIL: lwilliams@seismicexchange.com

Merle J. Duplantis
Retired Explorationist
Call as needed
(504) 236-4650
merleduplantis@outlook.com



Beacon Exploration

Al Baker, Jr. Senior Explorationist
Abaker1006@aol.com

529 Solitude Way
Covington, LA 70433
504-460-3421



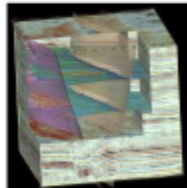
Apex Geophysical Services, Inc.

3337 N. Hullen St., Ste. 201

Metairie, La 70002

(O) 504-779-5006

(C) 504-231-2748



Richard D. Provensal
Richard@ApexGeophysical.com

Newsletter Ad Rates

Sessions	September - December (4 issues) and January - May (5 issues)
Business Card	\$25 per session
1/4-page	\$100 per session
1/2-page	\$250 per session
Full page	\$400 per session
Non-member Business Card	\$50 per session
Send ad copy to	David Broadbridge, Editor david@kimsuoil.com
Send payment to	SIPES New Orleans Chapter PO Box 50088

CHAPTER CONTACTS

Chairman

Louis Lemarié 504-393-8659,
lemarie6@cox.net

Vice-Chairman

Cliff Williams
cliffwilliams1@me.com

Treasurer

Eric Broadbridge
eric@northcoastoil.com

Secretary,

Historical & Remembrances

Membership, Scott Wainright
scott_wainwright@hotmail.com

Website & Newsletter

Dave Broadbridge
david@kimsuoil.com

Administrative Secretary and Reservations

Carol St. Germain 504-267-3466
CarolA.StGermain@gmail.com
National SIPES Board

Chapter Representative

Visit our SIPES New Orleans Chapter Website

<http://www.sipesneworleans.org/>
Past Newsletters Calendar Photos Links
Consultants and Advertisers

David Broadbridge, Webmaster
david@kimsuoil.com