



Chairman's Column

We welcome Chris McLindon to speak at our November meeting.
Hope to see everyone there!

Louis E. Lemarié

Abstract

Growth faults in the Gulf Coast Province have long been recognized as probable conduits for the vertical migration of fluids including brines, liquid hydrocarbon and methane. Studies have indicated that brines have migrated along faults from deep sources into freshwater aquifers and to the surface. At the same time several studies have shown that faults may act as barriers to fluid flow. The most plausible explanation for the contradictory evidence of fault-transmissivity is the concept of periodic flow. When faults are active, permeabilities and fluid potentials are increased, and the movement of fluids up the faults is possible, but when faults are inactive, permeabilities are reduced, and flow is retarded. Growth faults in the Gulf Coast are most active during periods of sedimentary loading associated with active deltaic deposition. The peak migration of fluids along faults is likely to have occurred during those periods of sedimentary loading. The migration of brines from deep sources into freshwater aquifers is cumulative result of periodic flow during episodes of fault movement over the span of geologic time. It is likely to have taken tens of millions of years for this migration to take place. A review of evidence for patterns of fault movement in the recent geologic past, including the historical past, provides some insights into ranges for the frequency and magnitude of fault slip events in south Louisiana that may allow for vertical transmissivity of fluids.

New Orleans Chapter Newsletter

Society of Independent Professional Earth Scientists
November 2022

Chris McLindon
Petroleum Geologist

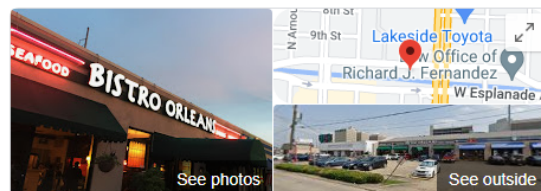
Faults as conduits and barriers to fluid flow in south Louisiana



Thursday, November 17th
Bistro Orleans - Metairie

Social 11:30 AM Lunch 12 Noon

Reservations and guests: Carol St. Germain - 504-267-3466



Bistro Orleans



[Website](#) [Directions](#) [Save](#) [Call](#)

4.3 ★★★★★ 353 Google reviews

\$\$ · Bistro

[ORDER DELIVERY](#)

Service options: Dine-in · Takeout · No-contact delivery

Address: 3216 W Esplanade Ave, Metairie, LA 70002

Hours: Closed · Opens 11AM ▾

Menu: places.singleplatform.com

Phone: (504) 304-1469

BRUNET

WEALTH MANAGEMENT

- EST 1984 -

Randy M. Brunet CPA PFS

Registered Representative*
eltonfan@bfg.nocoxmail.com

TEL (504) 838-0227

FAX (504) 833-5217

446 Rosa Avenue
Metairie, LA 70005

*Securities offered through HD VEST INVESTMENT SERVICES, Member SIPC | Advisory Services Offered Through HD VEST ADVISORY SERVICES, 6333 North State Highway 161, Suite 400, Irving, TX 75038 | (972) 870-0000
Brunet Wealth Management is not a registered broker/dealer or independent investment advisory firm.

Investment Management | Cash Flow and Debt Management
Family Risk Management | Retirement Planning
Education Planning | Legacy Planning | Business Planning
Special Situations Planning

BrunetWealthManagement.com



LaBay

Exploration Co., L.L.C.

1070 A West Causeway Approach
Mandeville, Louisiana 70471

Office (985) 951-2012
Fax (985) 951-2055

www.labayexploration.com

Merle J. Duplantis
Retired Explorationist
Call as needed
(504) 236-4650
merleduplantis@outlook.com

Wayne Cook
Seitel

Newsletter Ad Rates

Sessions	September - December (4 issues) and January - May (5 issues)
Business Card	\$25 per session
1/4-page	\$100 per session
1/2-page	\$250 per session
Full page	\$400 per session
Non-member Business Card	\$50 per session
Send ad copy to	David Broadbridge, Editor david@kimsuoil.com
Send payment to	SIPES New Orleans Chapter PO Box 50088

CHAPTER CONTACTS

Chairman
Louis Lemarié 504-393-8659,
lemarie6@cox.net

Vice-Chairman
Cliff Williams
cliffwilliams1@me.com

Treasurer
Eric Broadbridge
eric@northcoastoil.com

Secretary,
Historical & Remembrances

Membership, Scott Wainright
scott_wainwright@hotmail.com

Website & Newsletter
Dave Broadbridge
david@kimsuoil.com

Administrative Secretary
and Reservations
Carol St. Germain 504-267-3466
CarolA.StGermain@gmail.com
National SIPES Board

Chapter Representative

Visit our SIPES New Orleans Chapter Website

<http://www.sipesneworleans.org/>
Past Newsletters Calendar Photos Links
Consultants and Advertisers

David Broadbridge, Webmaster
david@kimsuoil.com