



New Orleans Chapter Newsletter

Society of Independent Professional Earth Scientists
February 2023

Bob Jacobsen

"The High-Definition Flood Inundation Map for the August 2016 Flood for the Amite River Basin"



Chairman's Column

We welcome Bob Jacobsen to speak at our February meeting.
Hope to see everyone there!

Louis E. Lemarié

Abstract

The HD-FIM (*High-Definition Flood Inundation Map*) is a "state-of-the-art" and "first-in-the-nation" high-resolution/high-accuracy, interactive raster map for a major regional flood. The presentation will describe the advanced methods employed to create the HD-FIM. The project was sponsored by the Amite River Basin Commission.

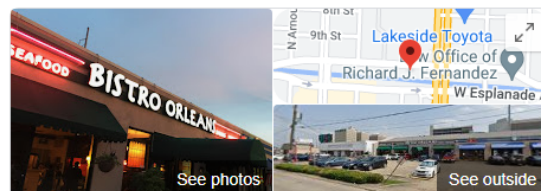
Bob Jacobsen - Bob holds two master's degrees from LSU concentrating in Environmental Policy and Environmental Engineering. He has worked in hydrological risk—environmental and flood—for 40 years specializing in advanced studies of the complex challenges facing south Louisiana. Bob served as a consultant on storm surge hazard analysis and risk reduction to the SLFPA-E and CPRA during the post-Katrina construction of the HSDRRS and as a flood risk consultant to the Amite River Basin Commission for close to twenty years. In 2022 he authored a two-part article on Property-Specific Flood Resiliency, for the LOUISIANA CIVIL ENGINEER. He is a past-president of the American Society of Civil Engineers Baton Rouge Branch and the Louisiana Section.

Thursday, February 16th

Bistro Orleans - Metairie

Social 11:30 AM Lunch 12 Noon

Reservations and guests: Carol St. Germain - 504-267-3466



Bistro Orleans

Website Directions Save Call

4.3 ★★★★★ 353 Google reviews

\$\$ · Bistro

[ORDER DELIVERY](#)

Service options: Dine-in · Takeout · No-contact delivery

Address: 3216 W Esplanade Ave, Metairie, LA 70002

Hours: Closed · Opens 11AM ▾

Menu: [places.singleplatform.com](https://places.singleplatform.com/bistro-orleans-metairie/)

Phone: (504) 304-1469

BRUNET

WEALTH MANAGEMENT

- EST 1984 -

Randy M. Brunet CPA PFS

Registered Representative*
eltonfan@bfg.nocoxmail.com

TEL (504) 838-0227

FAX (504) 833-5217

446 Rosa Avenue
Metairie, LA 70005

*Securities offered through HD VEST INVESTMENT SERVICES, Member SIPC | Advisory Services Offered Through HD VEST ADVISORY SERVICES, 6333 North State Highway 161, Suite 400, Irving, TX 75038 | (972) 870-0000
Brunet Wealth Management is not a registered broker/dealer or independent investment advisory firm.

Investment Management* | Cash Flow and Debt Management
Family Risk Management | Retirement Planning
Education Planning | Legacy Planning | Business Planning
Special Situations Planning

BrunetWealthManagement.com



LaBay

Exploration Co., L.L.C.

1070 A West Causeway Approach
Mandeville, Louisiana 70471

Office (985) 951-2012
Fax (985) 951-2055

www.labayexploration.com

Merle J. Duplantis
Retired Explorationist
Call as needed
(504) 236-4650
merleduplantis@outlook.com

Wayne Cook
Seitel

Newsletter Ad Rates

Sessions	September - December (4 issues) and January - May (5 issues)
Business Card	\$25 per session
1/4-page	\$100 per session
1/2-page	\$250 per session
Full page	\$400 per session
Non-member Business Card	\$50 per session
Send ad copy to	David Broadbridge, Editor david@kimsuoil.com
Send payment to	SIPES New Orleans Chapter PO Box 50088

CHAPTER CONTACTS

Chairman
Louis Lemarié 504-393-8659,
lemarie6@cox.net

Vice-Chairman
Cliff Williams
cliffwilliams1@me.com

Treasurer
Eric Broadbridge
eric@northcoastoil.com

Secretary,
Historical & Remembrances

Membership, Scott Wainright
scott_wainwright@hotmail.com

Website & Newsletter
Dave Broadbridge
david@kimsuoil.com

Administrative Secretary
and Reservations
Carol St. Germain 504-267-3466
CarolA.StGermain@gmail.com
National SIPES Board

Chapter Representative

Visit our SIPES New Orleans Chapter Website

<http://www.sipesneworleans.org/>
Past Newsletters Calendar Photos Links
Consultants and Advertisers

David Broadbridge, Webmaster
david@kimsuoil.com